

A M B E  L I N E

HIGH PERFORMANCE WINDOWS AND DOORS

## AMBERLINE U.S.

Amberline U.S. is an extension of Amberline Europe, which was established in 2006.

Since its inception, Amberline has strived to achieve the highest standards for manufacturing quality in all of our window and door systems.



# CONTENTS

3

MISSION

4

PROJECT

6

AMBERLINE TEAM

7

PRODUCTION

8

WHY AMBERLINE?

10

PARTNERS

11

CONTACT US

# MISSION

It is the mission of  
Amberline US to improve  
the quality of living  
through simplified delivery  
of eco-friendly and energy  
efficient solutions into the  
built environment.

# 65 MORELAND

ROXBURY, MA



7-UNIT PASSIVE HOUSE

## STATUS

PURCHASE ORDER

uPVC Windows  
Amberline Veka Softline 76  
Triple-glazed

## VALUE

\$2.5 MILLION

Established Permit Cost

## PACKAGE

\$150,000

Amberline Window and Door  
Package

# 457 W. BROADWAY

S. BOSTON, MA



THE BLAKE

## STATUS

FABRICATION

uPVC Windows  
Amberline Veka Perfectline 70  
Double-glazed

## VALUE

\$18 MILLION

Established Permit Cost

## PACKAGE

\$275,000

Amberline Window Package  
Aluminum Storefront  
Aluprof MB70 Double-glazed

# 44 N. BEACON

ALLSTON, MA



## STATUS

INSTALL 8/2020

uPVC Windows  
Amberline Veka Softline 82  
Triple-glazed

## VALUE

\$8.5 MILLION

Established Permit Cost

## PACKAGE

\$275,000

Amberline Window Package  
Aluminum Storefront  
Aluprof MB86 Triple-glazed

# 2837 WASHINGTON

BOSTON, MA



## STATUS

INSTALL 9/2020

uPVC Windows  
Amberline Veka Softline 76  
Triple-glazed

## VALUE

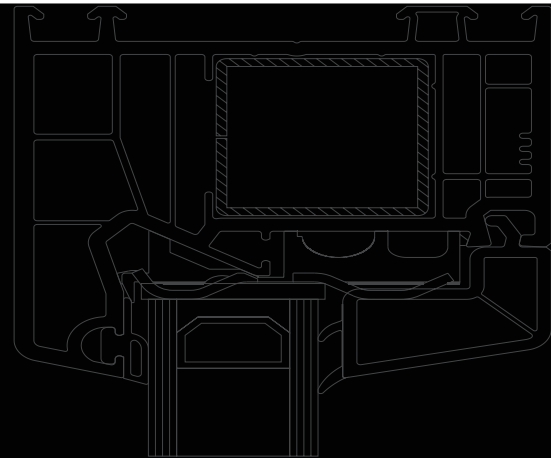
\$1.5 MILLION

Established Permit Cost

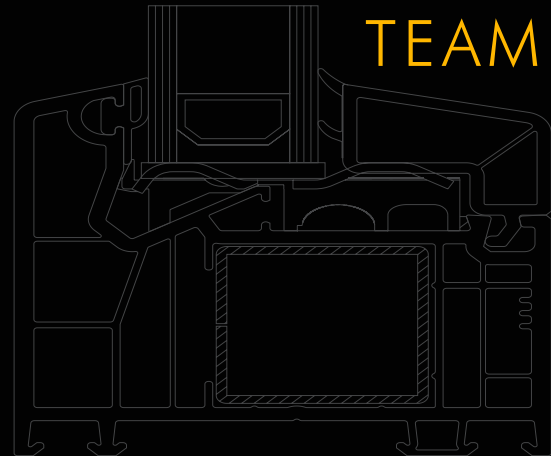
## PACKAGE

\$75,000

Amberline Window and Door  
Package



## THE AMBERLINE TEAM



**JAMES DRYSDALE**

Managing Director

**SIOBHAN MCLAUGHLIN**

Project Manager

**PAIGE STATHOPOULOS**

Technical Detail Coordinator

**TAEOR CRAWLEY**

Marketing Director

**PETER LAVELLE**

Human Resources

**MICHELE GRANATO**

Accounting

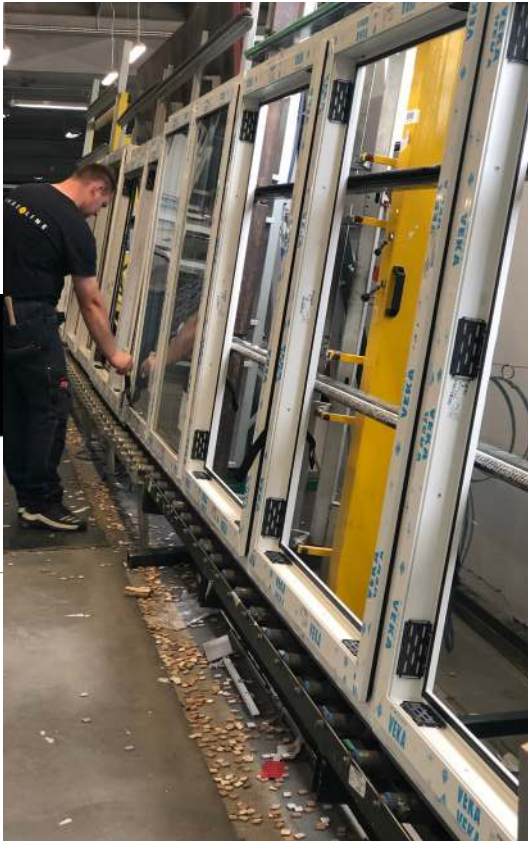
# AMBERLINE PRODUCTION

## Amberline has manufactured high performance windows and doors since 2006

Along with making high performance windows and doors, Amberline is Passive House certified in both uPVC and aluminum. Although we are new to the U.S. distribution market, Amberline has a 15-year history providing windows and doors throughout Europe, and this includes Poland, Germany, France, Ireland, and Sweden.

## GROWING PRODUCTION CAPABILITIES IN KOLOZBREG, POLAND

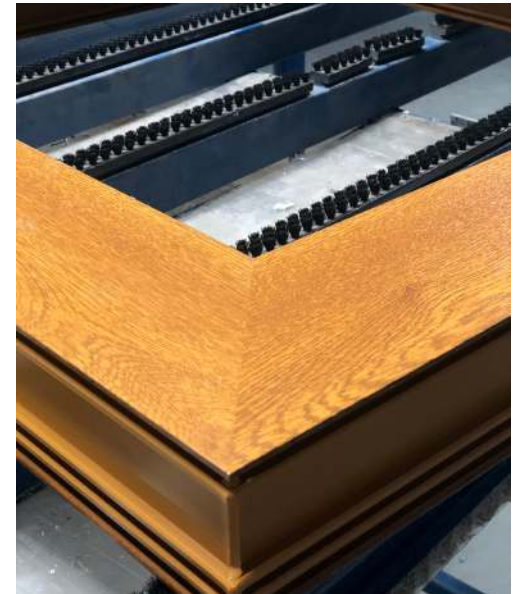
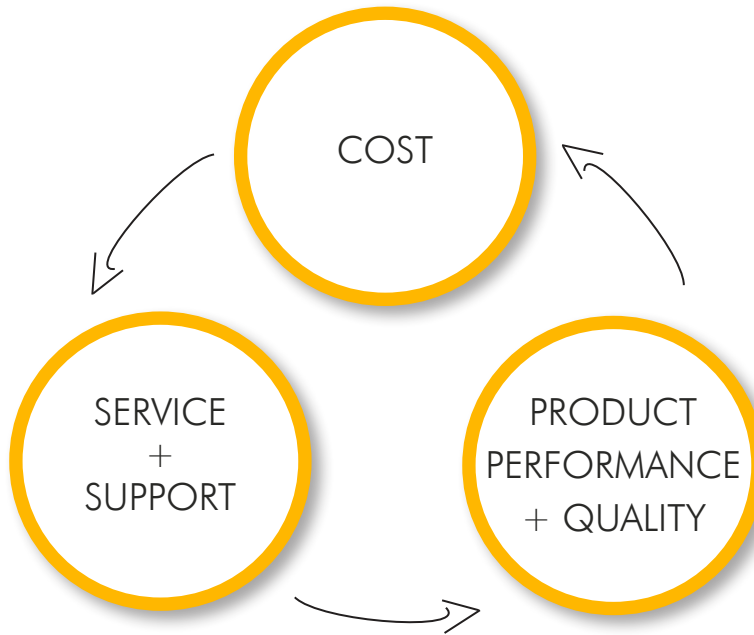
Year	2019
PVC units	110,000 UNITS
Aluminum units	52,000 UNITS (+ 25,000 UNITS IN NEAR FUTURE)
Distribution	OVER 150 INTERNATIONAL PARTNERS IN EU
Employees	190 EMPLOYEES



# WHY AMBERLINE?

## OUR FOCUS

Using three major components in the supply process, we create the best value in our products for key decision makers and end users.





# WHY IS **AMBERLINE** THE BEST CHOICE FOR HIGH PERFORMANCE WINDOW AND DOOR PRODUCTS?

## **PROVEN TRACK RECORD**

Supplying high performance and quality products at a very cost competitive price throughout Europe for the past 15 years

## **TECHNICAL EXPERIENCE**

Ability to navigate high value and challenging projects

## **ADVANCED MANUFACTURING FACILITIES**

One of the most automated in Europe increasing production efficiency

## **UNIQUE PARTNERSHIP**

Distribution into the US eliminates “middle men” and gray area about European supply importers

## **COMMITMENT**

Guaranteed time delivery 12 weeks and under from order date

## **WARRANTY**

10-year system warranty, which is an industry standard that says we stand behind our products

## **PROJECT SCOPE**

Conceptional design through installation training and support

## **PRODUCT SUPPLY CHAIN**

Every component in our products is from leading European suppliers



# PARTNERS

Our products are only as good as the partners and systems used on every unit that we sell. Each component making up a product in our PVC or aluminum systems has been carefully selected for quality, durability, and cost.

PVC FRAME



PVC HARDWARE



ALUMINUM FRAME



ALUMINUM SILLS



WINDOW + DOOR HARDWARE



GLASS AND IGU



# A M B E R L I N E

HIGH PERFORMANCE WINDOWS AND DOORS

## CONTACT

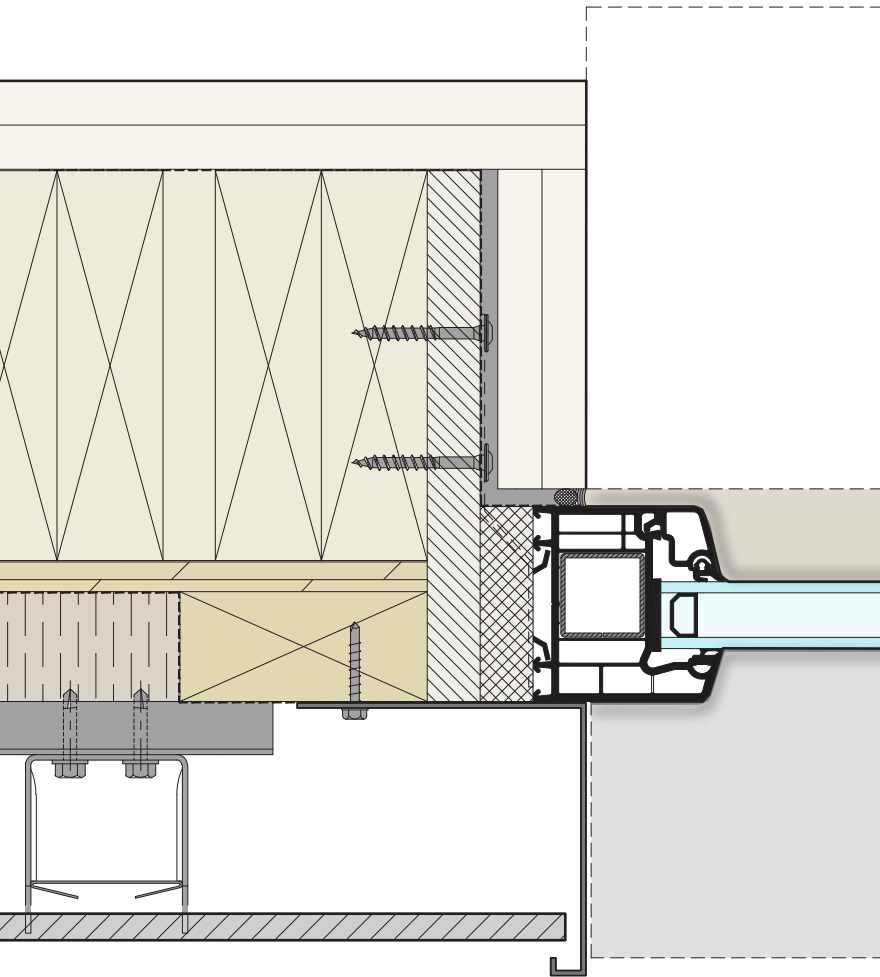
[James@amberlinewindows.us](mailto:James@amberlinewindows.us)

## VISIT

[amberlinewindows.us](http://amberlinewindows.us)

## FOLLOW

[@amberline\\_northeast](https://www.instagram.com/amberline_northeast)



AMBERLINE