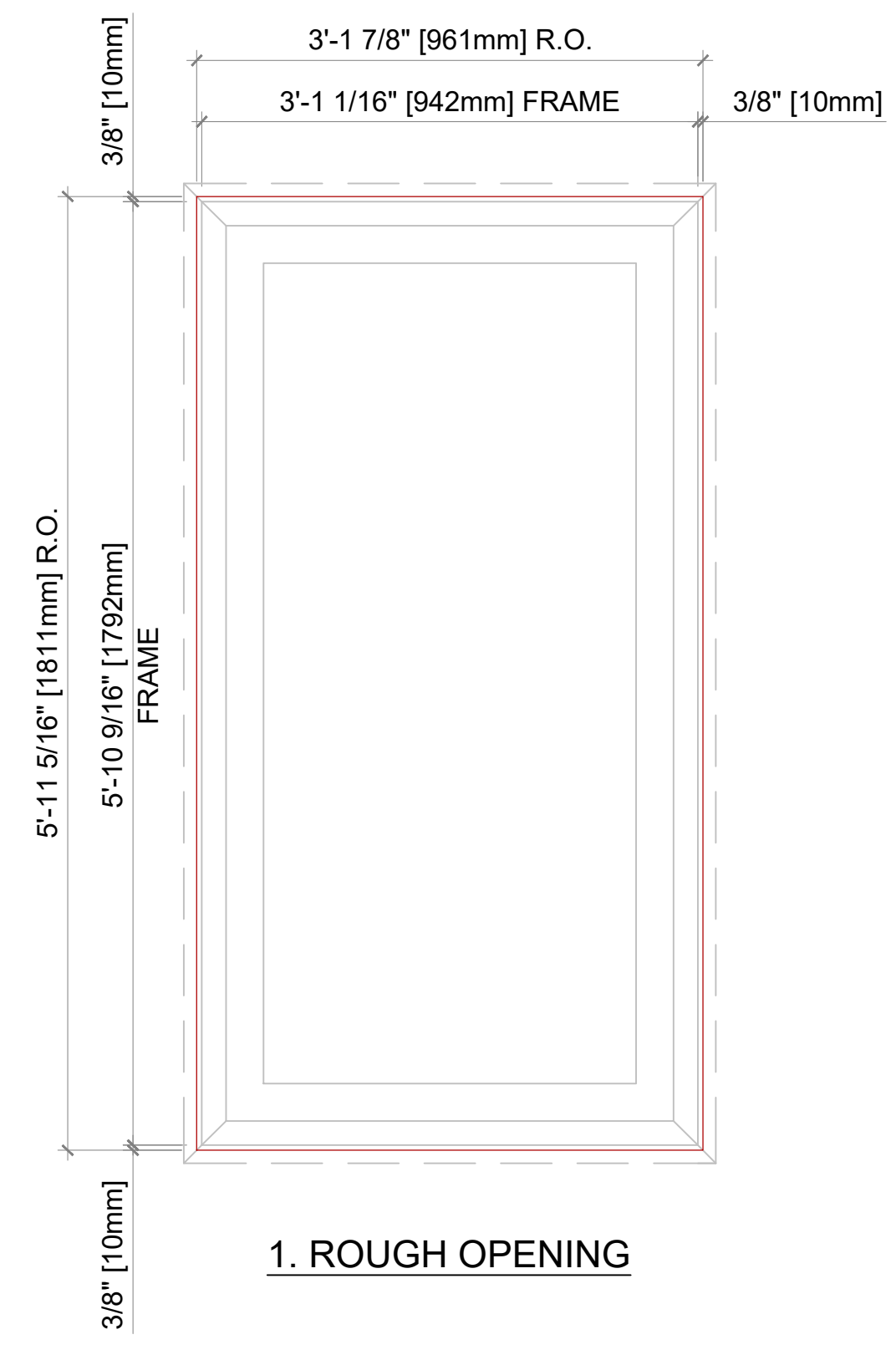
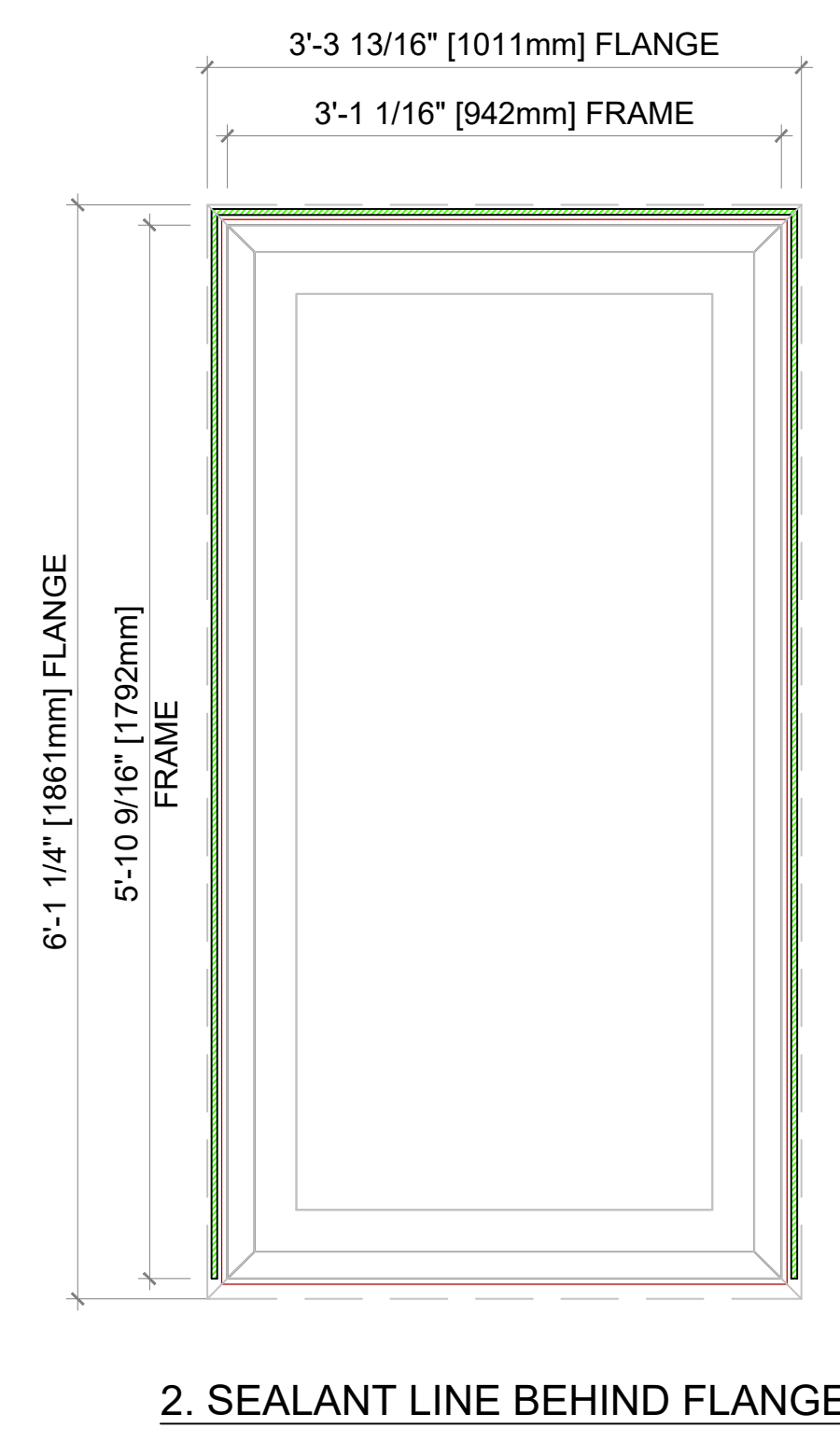


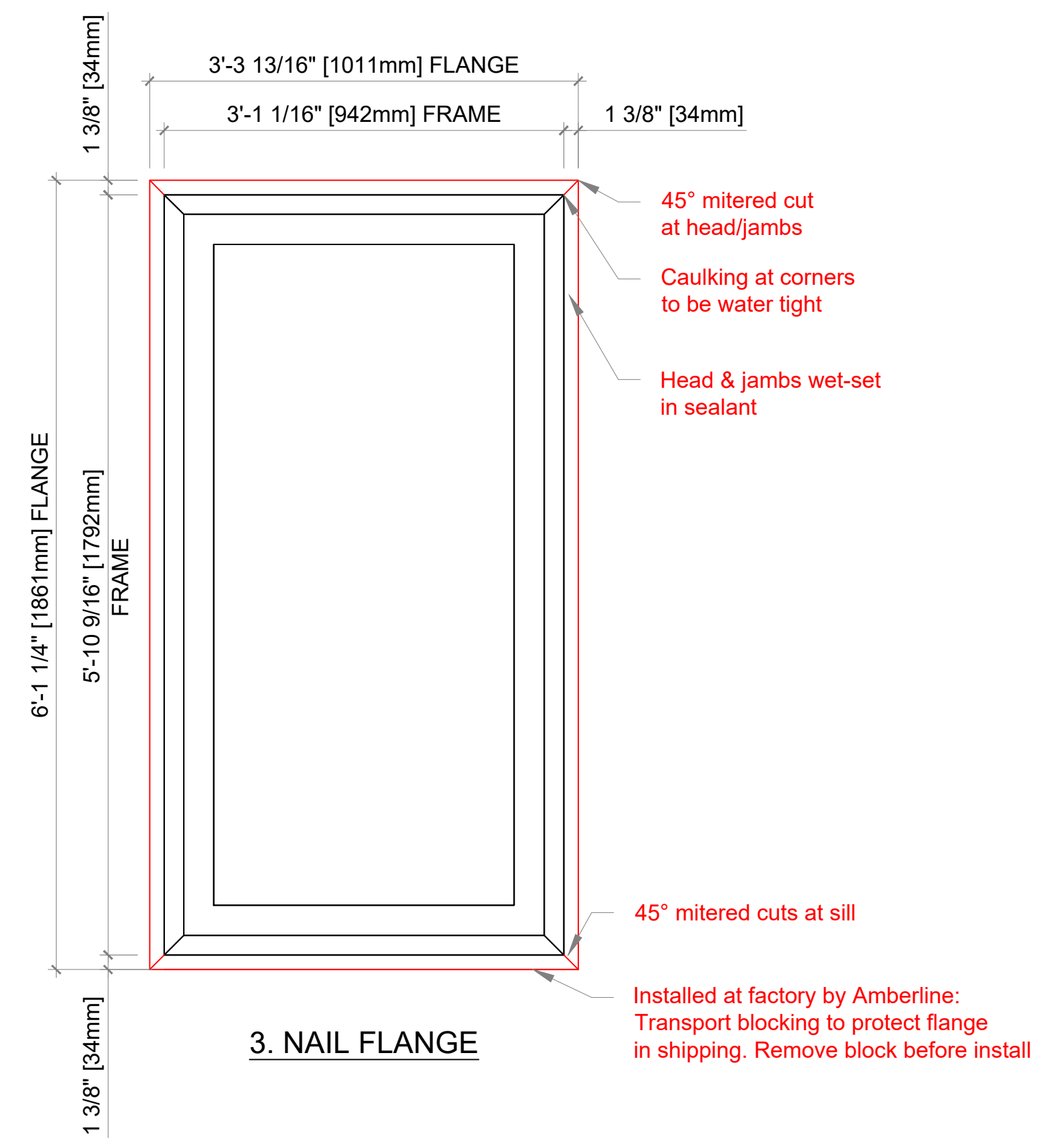
Elevation key:



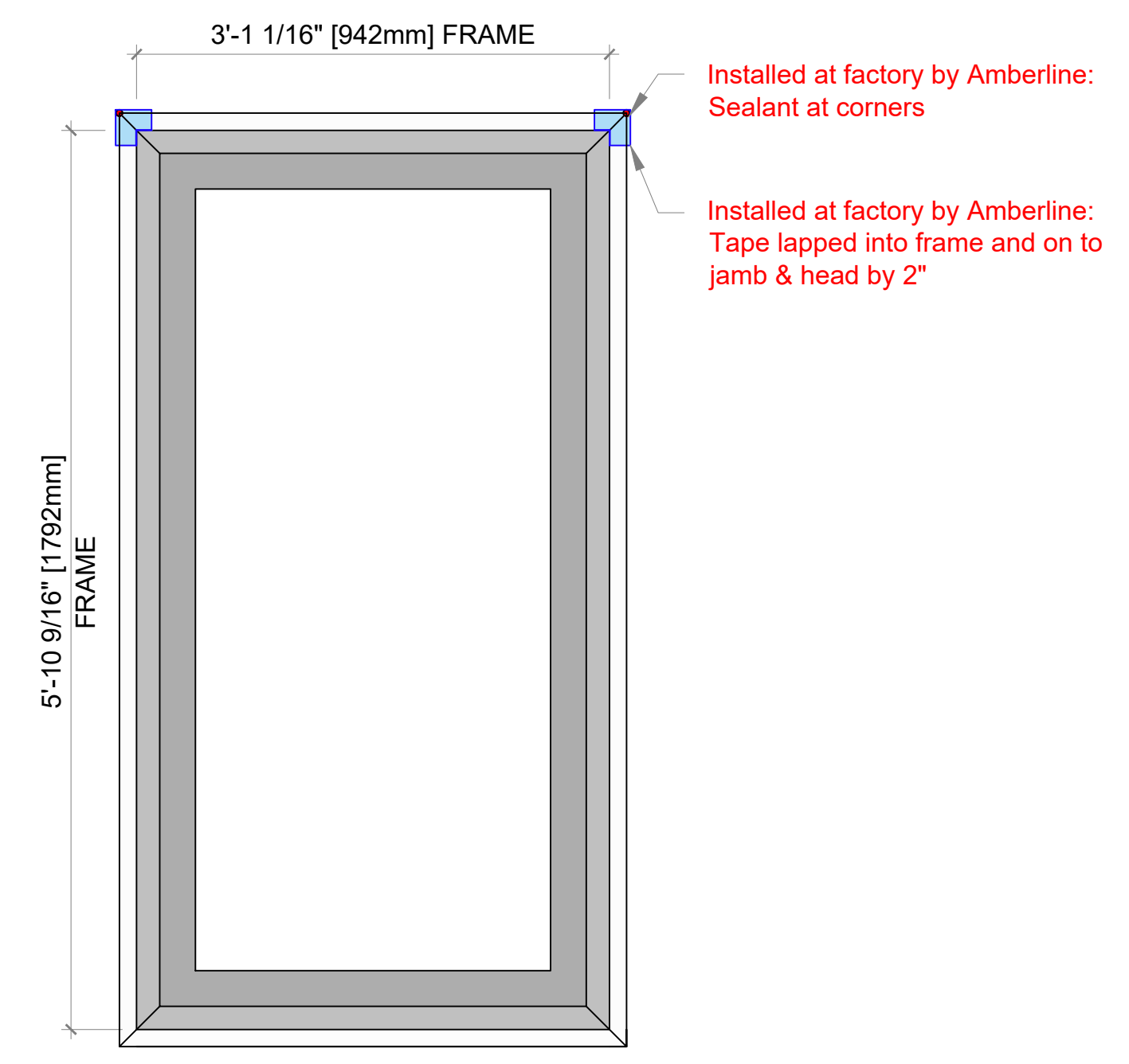
1. ROUGH OPENING



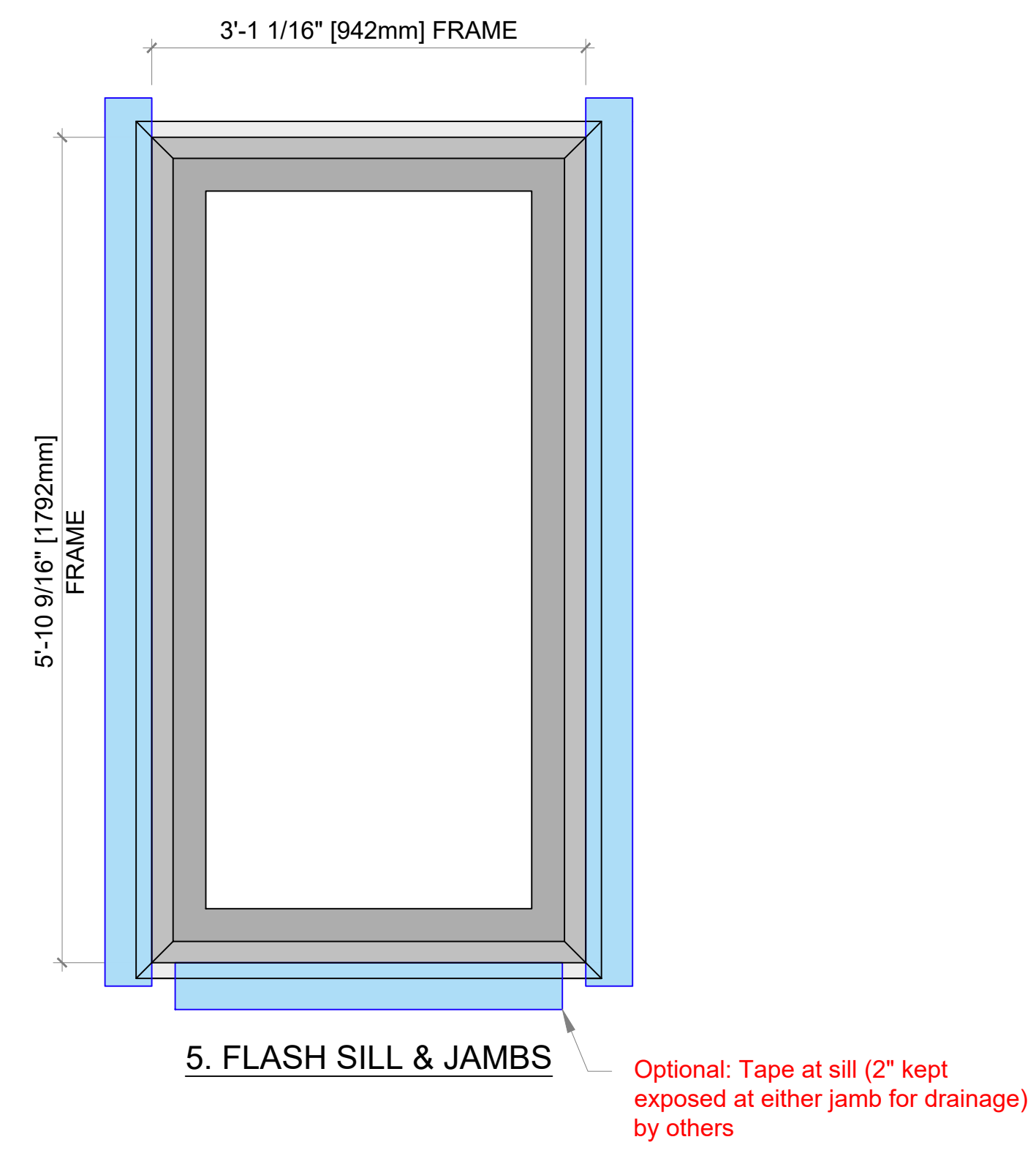
2. SEALANT LINE BEHIND FLANGE



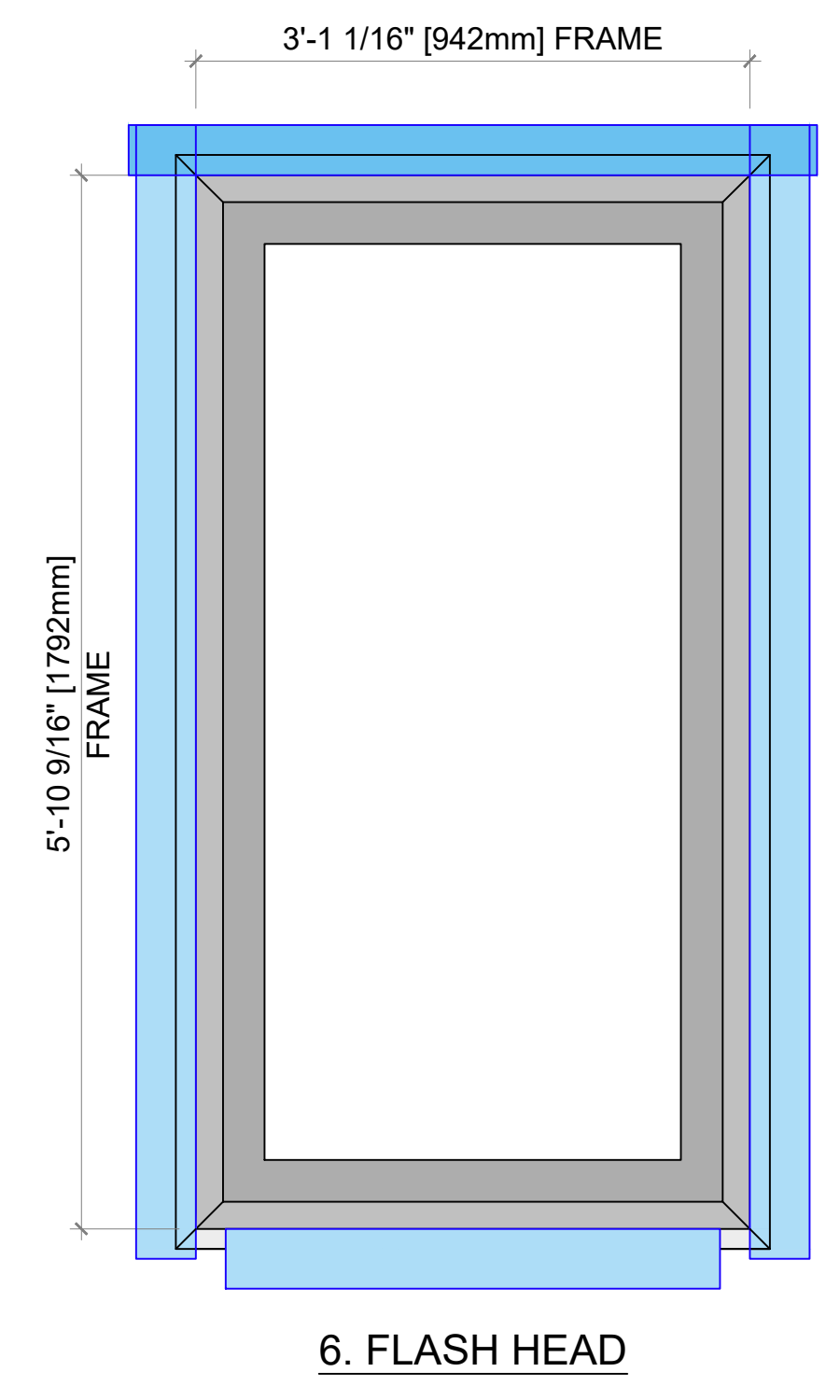
3. NAIL FLANGE



4. SEALANT AT MITERED CORNERS



5. FLASH SILL & JAMBS

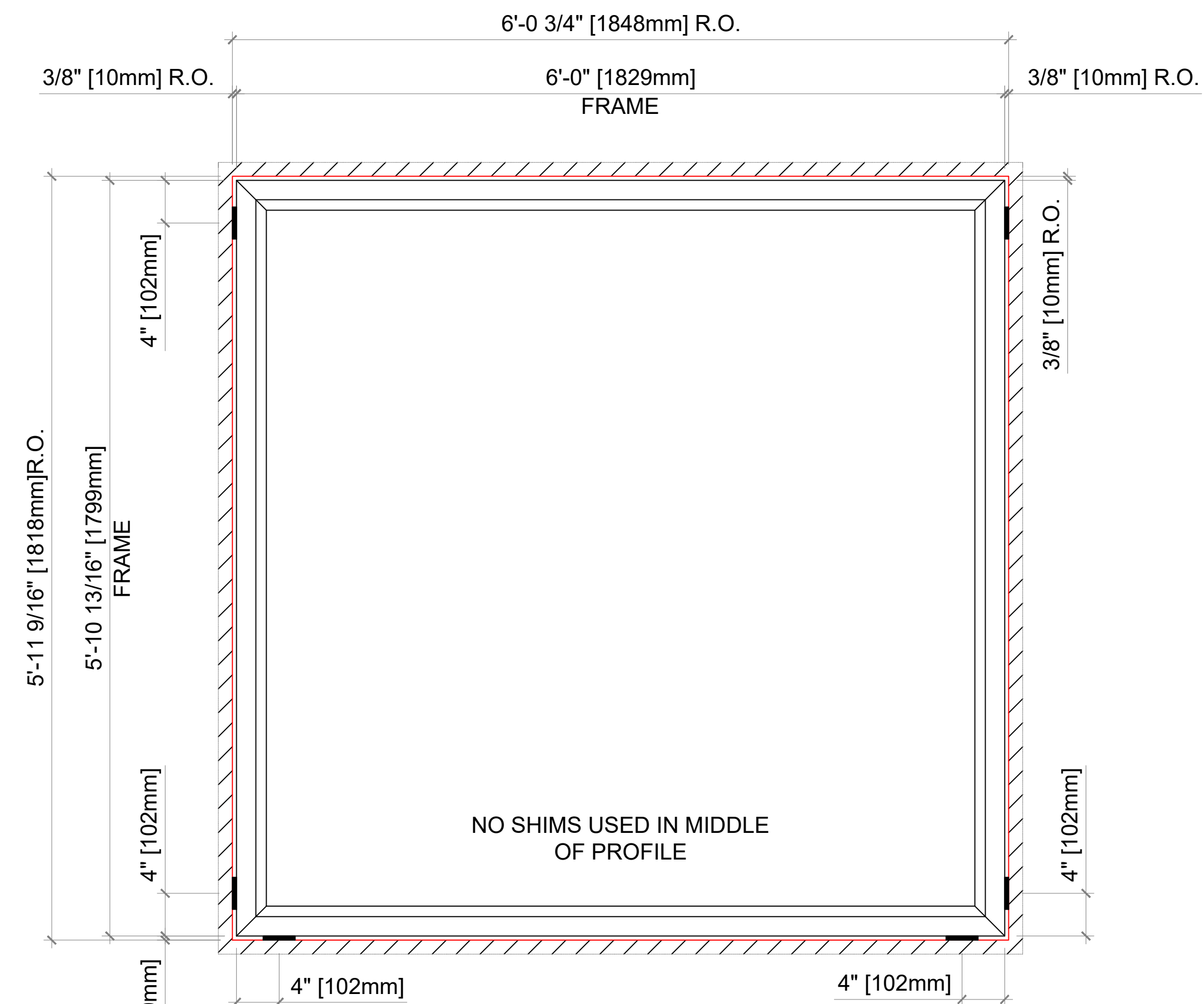


6. FLASH HEAD

AMBERLINE

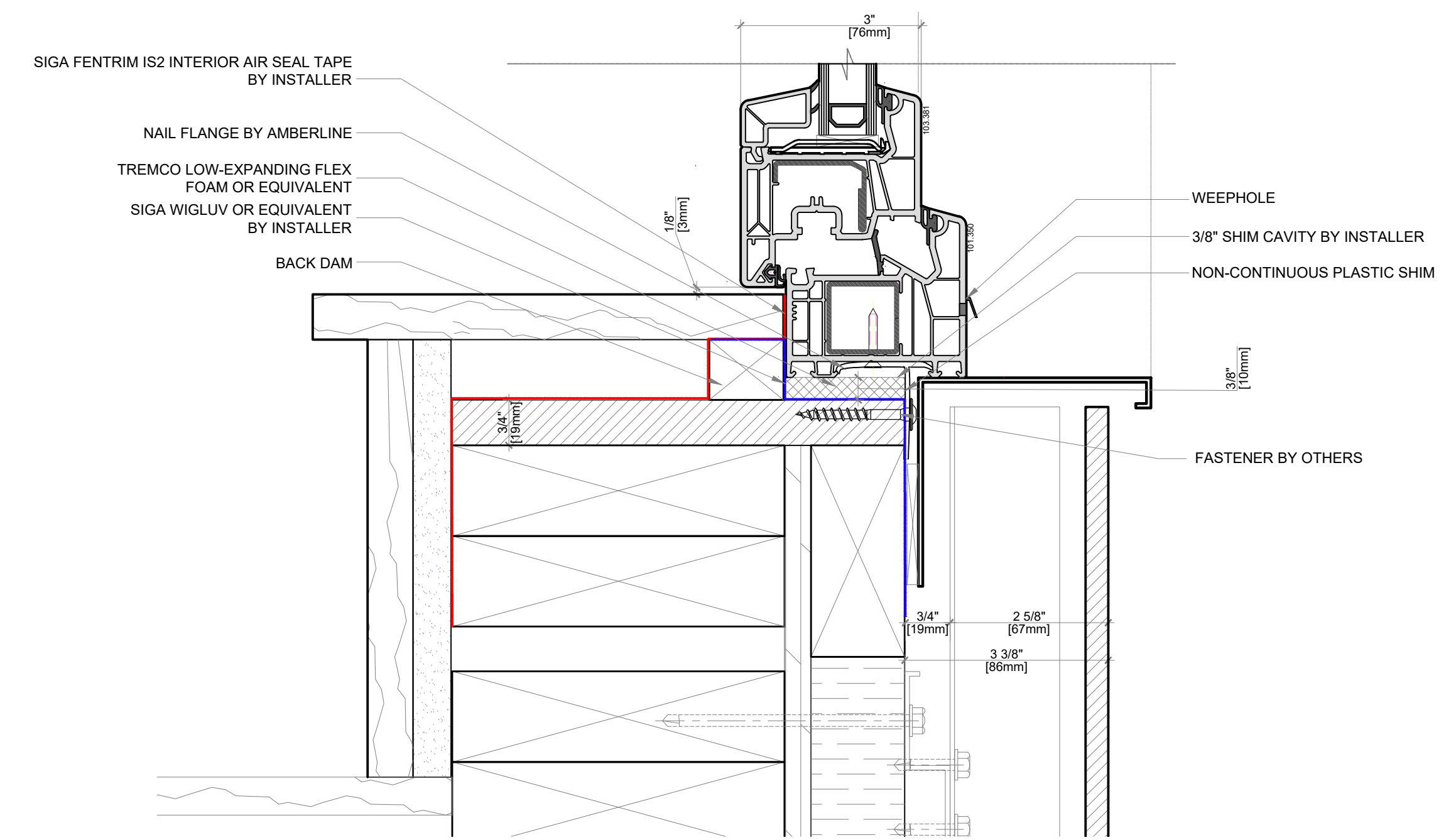
Notes:

A



1 Shim Placement - Window
 DG-IIA SCALE: 1:10 THIS APPLIES TO ALL OPERABLE AND FIXED WINDOWS

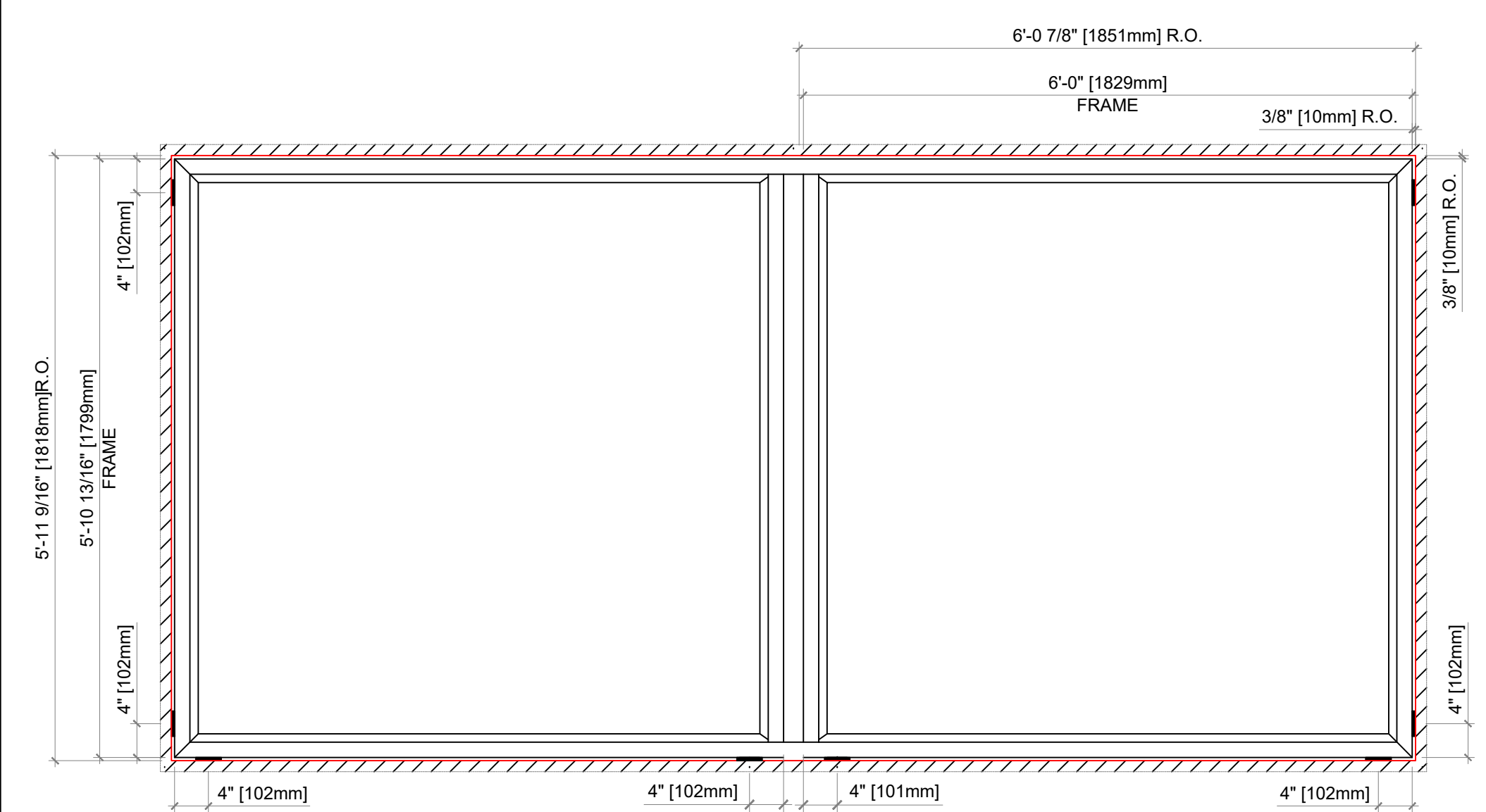
Note:
 Example install detail for reference only.
 Project specific will vary.



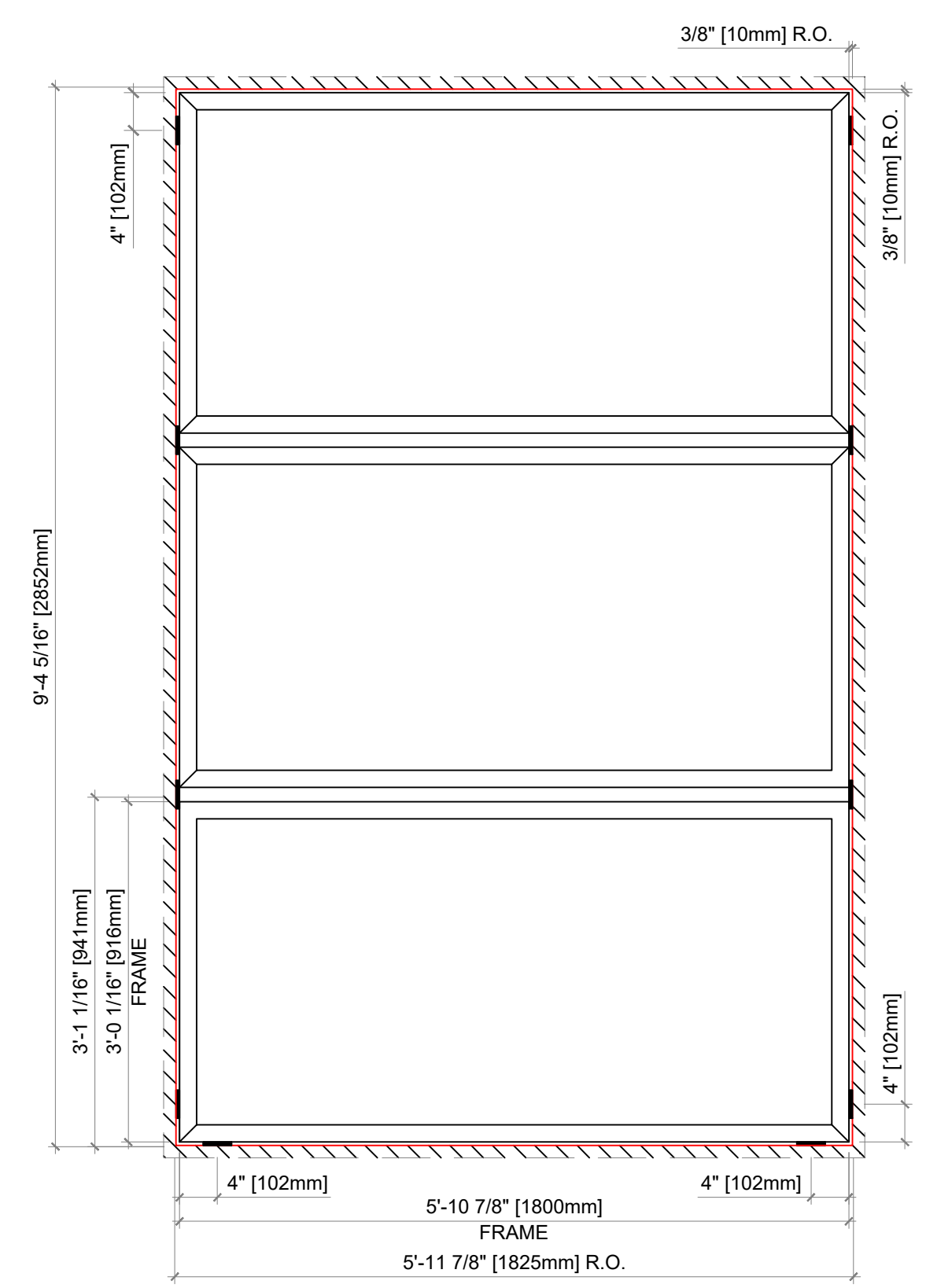
Rules for Shim:
 Typical for all 4 sides is 3/8" (10mm)
 Max is 1/2" (12mm)
 Min is 1/4" (6mm)

2 Rough Opening Shim/Insulation Cavity
 DG-IIA SCALE: 1:2

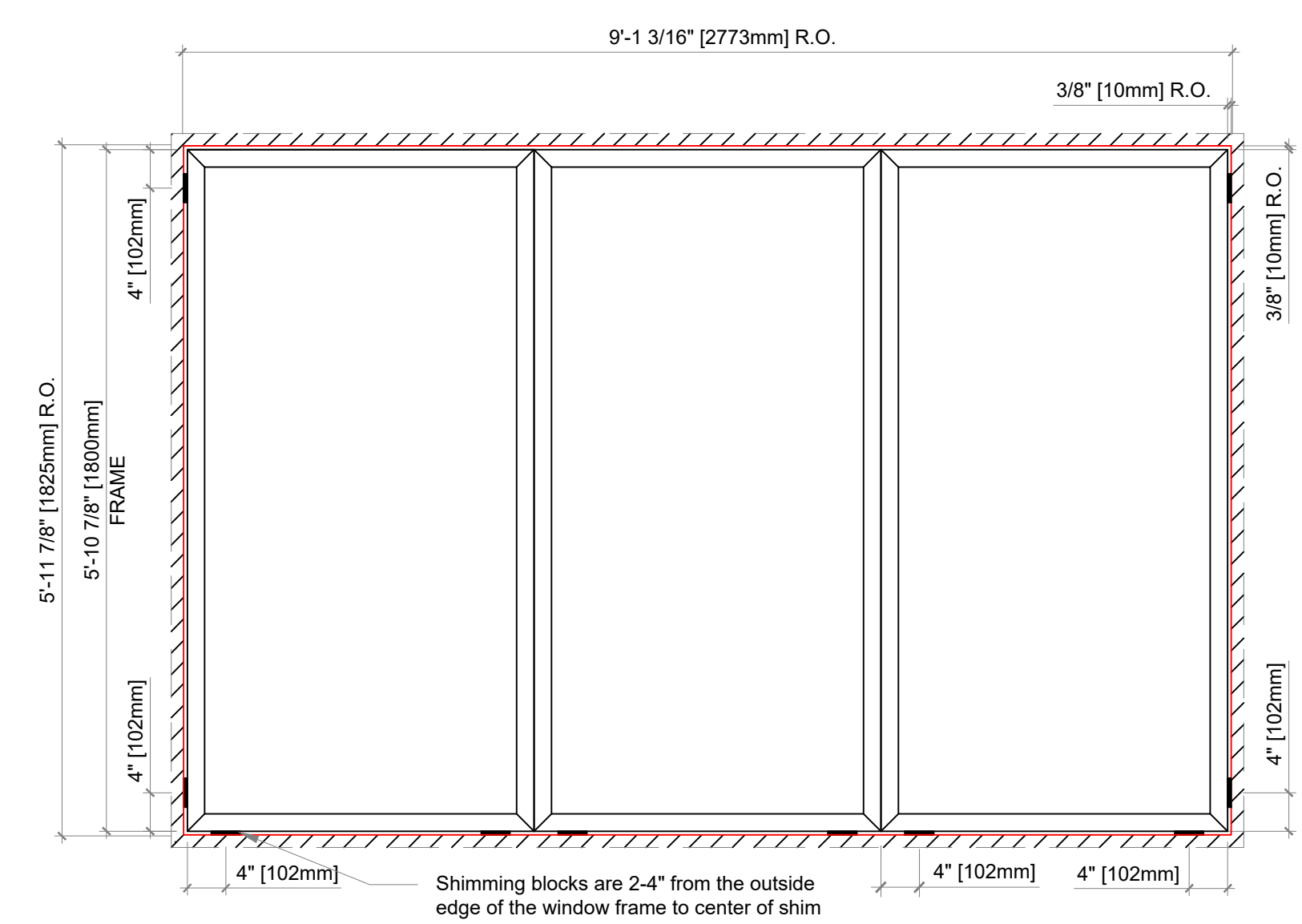
Elevation key:



3 Shim Placement - Typical Size Factory Mullered Window
 DG-IIA SCALE: 1:16 (FIXED OR OPERABLE)



4 Shim Placement - Vertical Frame to Frame
 DG-IIA SCALE: 1:16



5 Shim Placement - 3 Frame to Frame Mullered Window
 DG-IIA SCALE: 1:16 (FIXED OR OPERABLE)

AMBERLINE

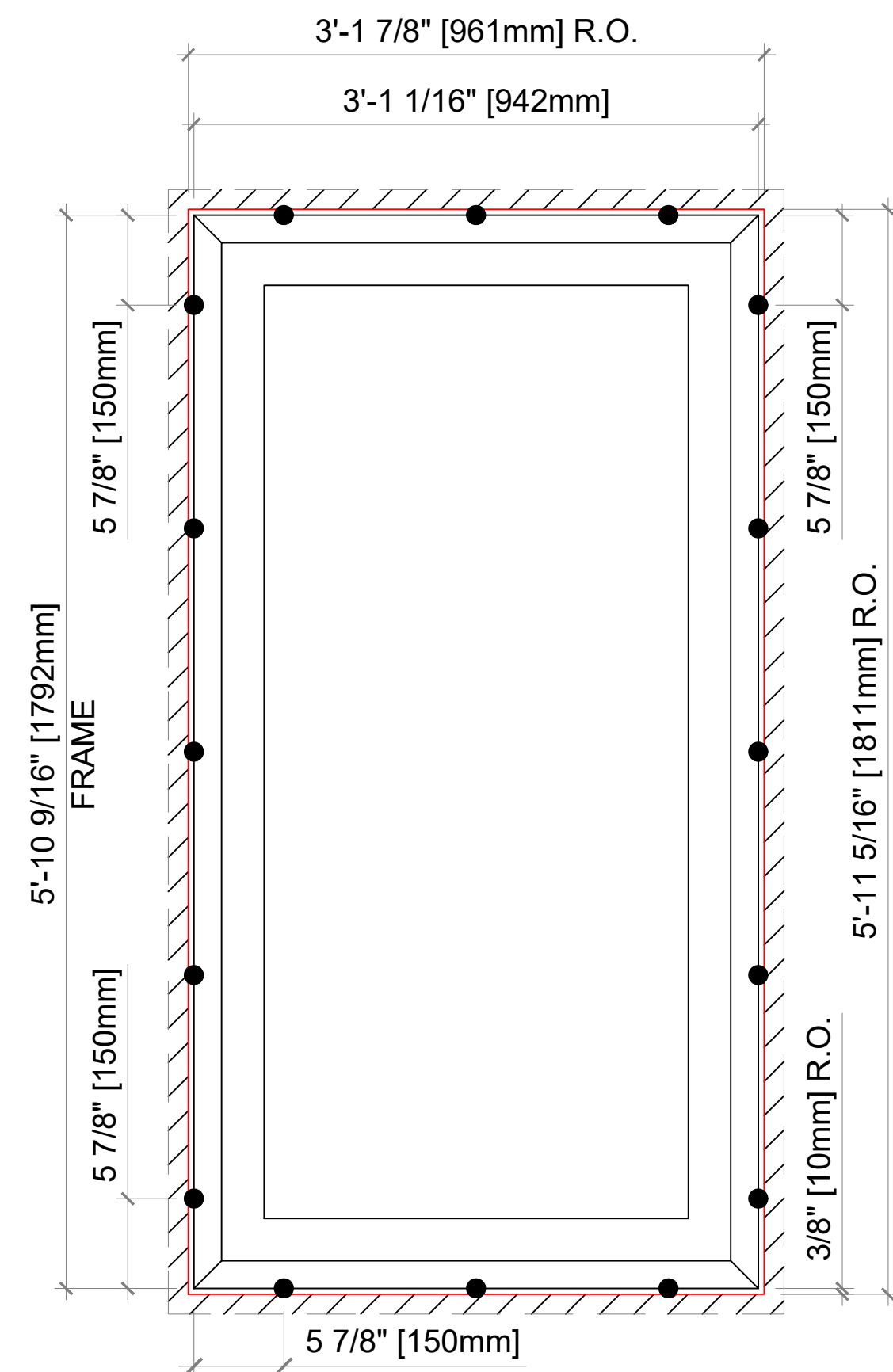
Notes:

Shimming blocks are 2-4" from the outside edge of the window frame to the center of the shim.
 Recommended rough opening is 3/8" (10mm) on all sides.
 Note: Nail Flange is not drawn in unit elevations to provide clarity around Rough Opening.

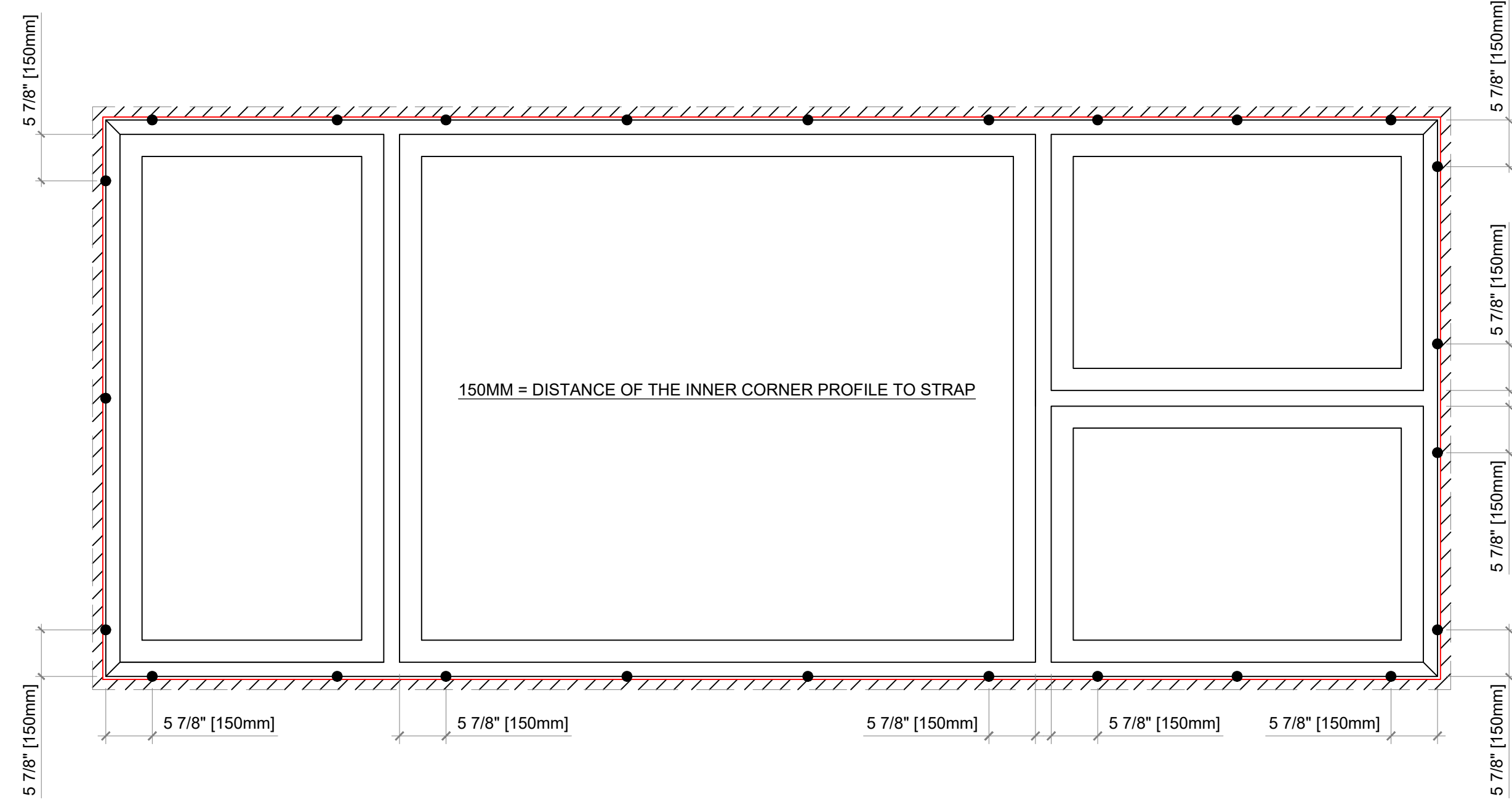
— = SHIMMING / PACKING BLOCKS (PLASTIC OR COMPOSITE SHIMS MEANING NO WOOD SHIMS)

B

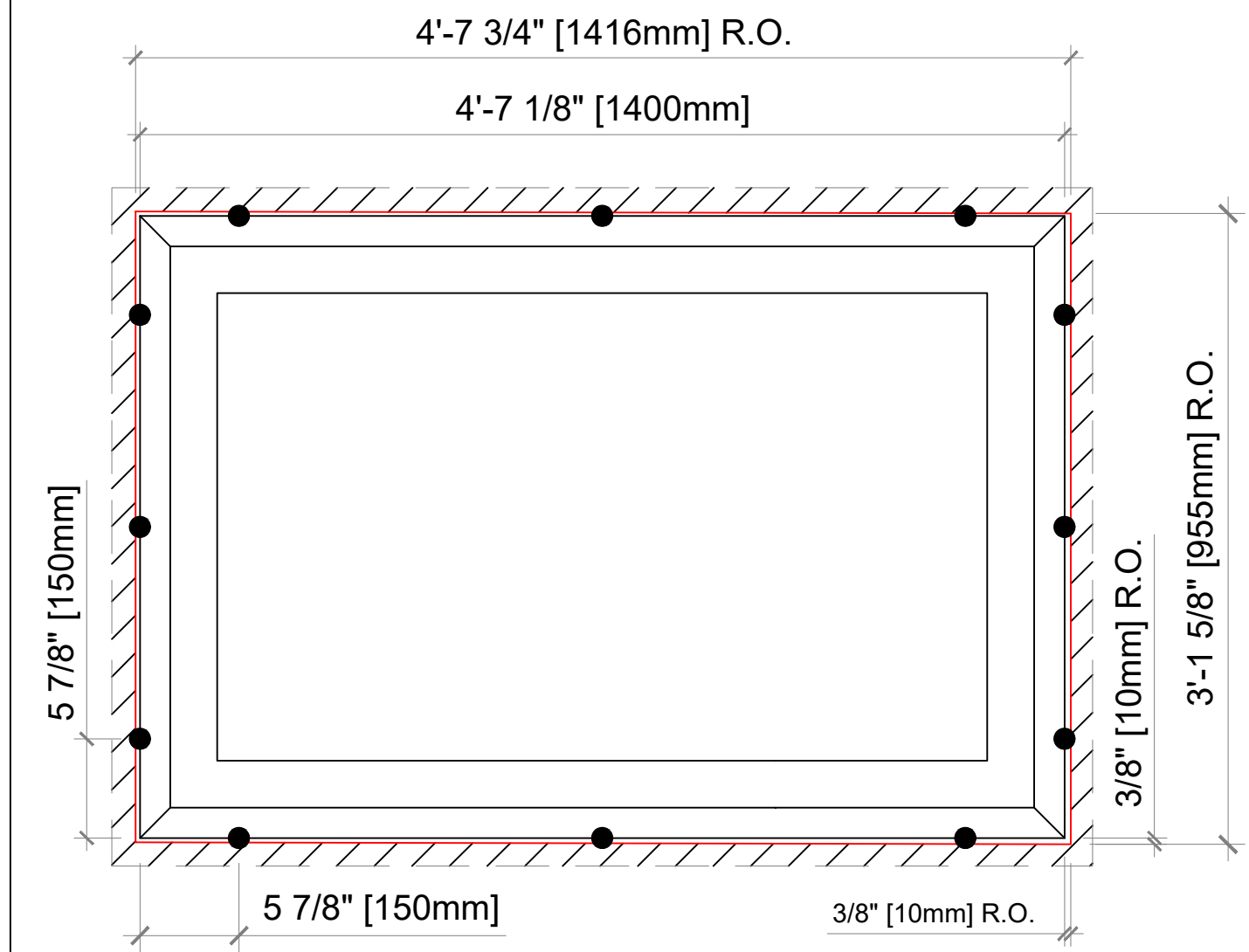
Detail Type : Shimming of the uPVC or Aluminum Window Elements	
Drawing Title : Amberline uPVC or Aluminum Shimming/Nail Flange Guidelines	
Date : 11/8/2022	
Drawn By : CN	Scale : Refer to Drawing
Drawing No : DG-B	



1 Fastener Placement - Fixed Window 942x1792mm
 DG-IIB SCALE: 1:10

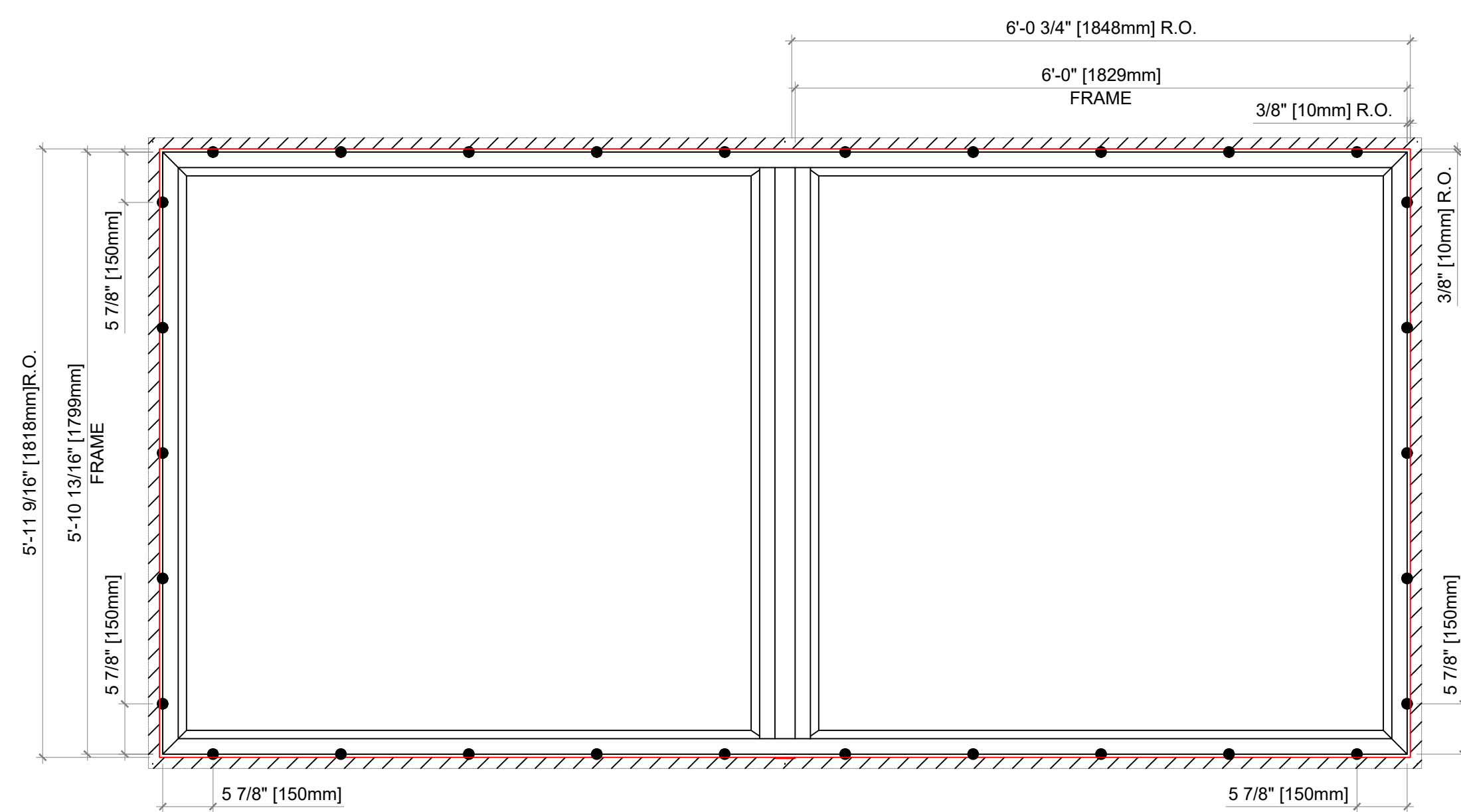


2 Distances for the Fasteners
 DG-IIB SCALE: 1:15

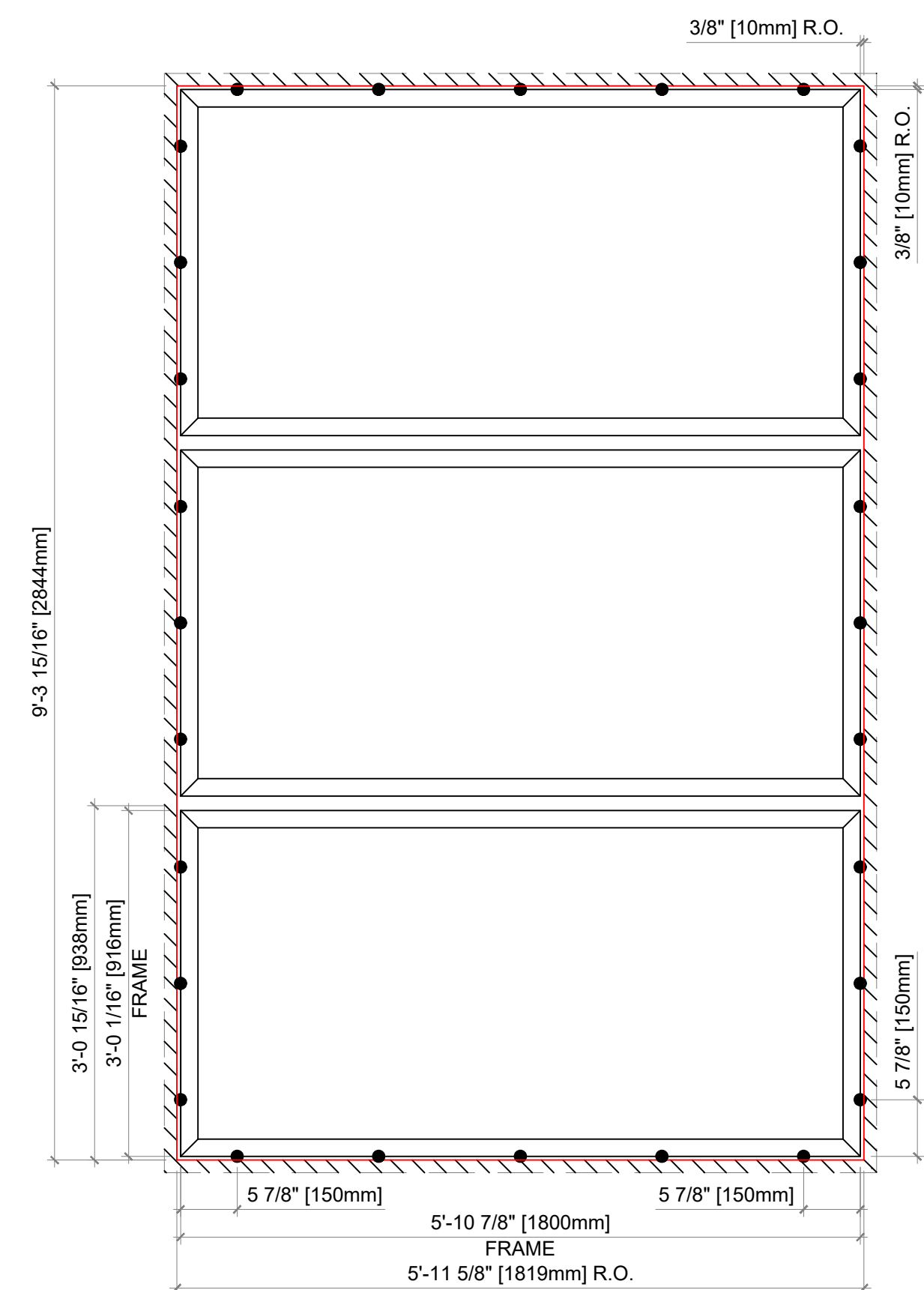


3 Fastener Placement - Fixed Window 1400x942mm
 DG-IIB SCALE: 1:10

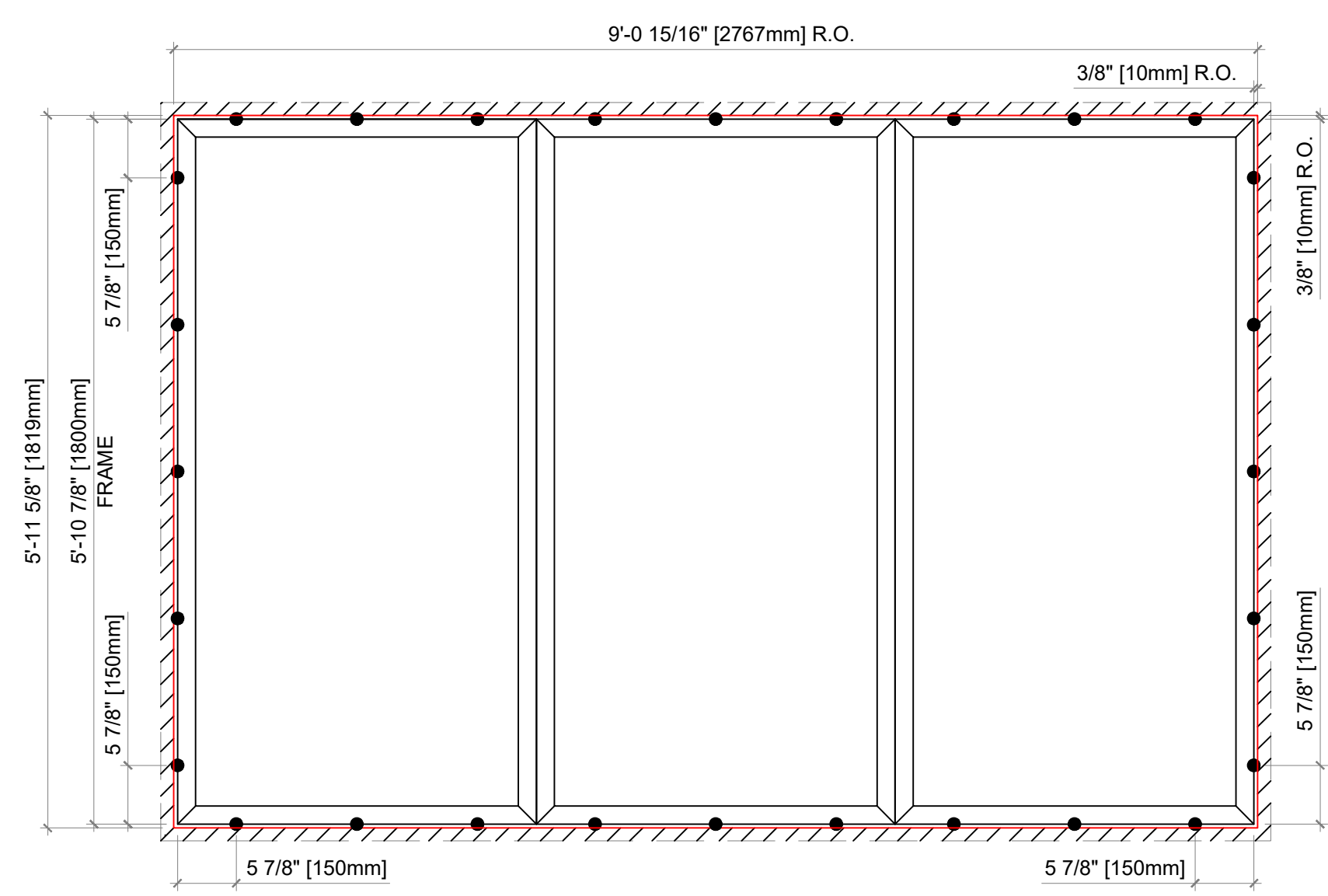
Elevation key:



4 Fastener Placement - Typical Size Factory Muller Window
 DG-IIB SCALE: 1:10



5 Fastener Placement - Vertical Frame to Frame
 DG-IIB SCALE: 1:10



6 Fastener Placement - 3 Frame to Frame Muller Window
 DG-IIB SCALE: 1:10

A M B E R L I N E

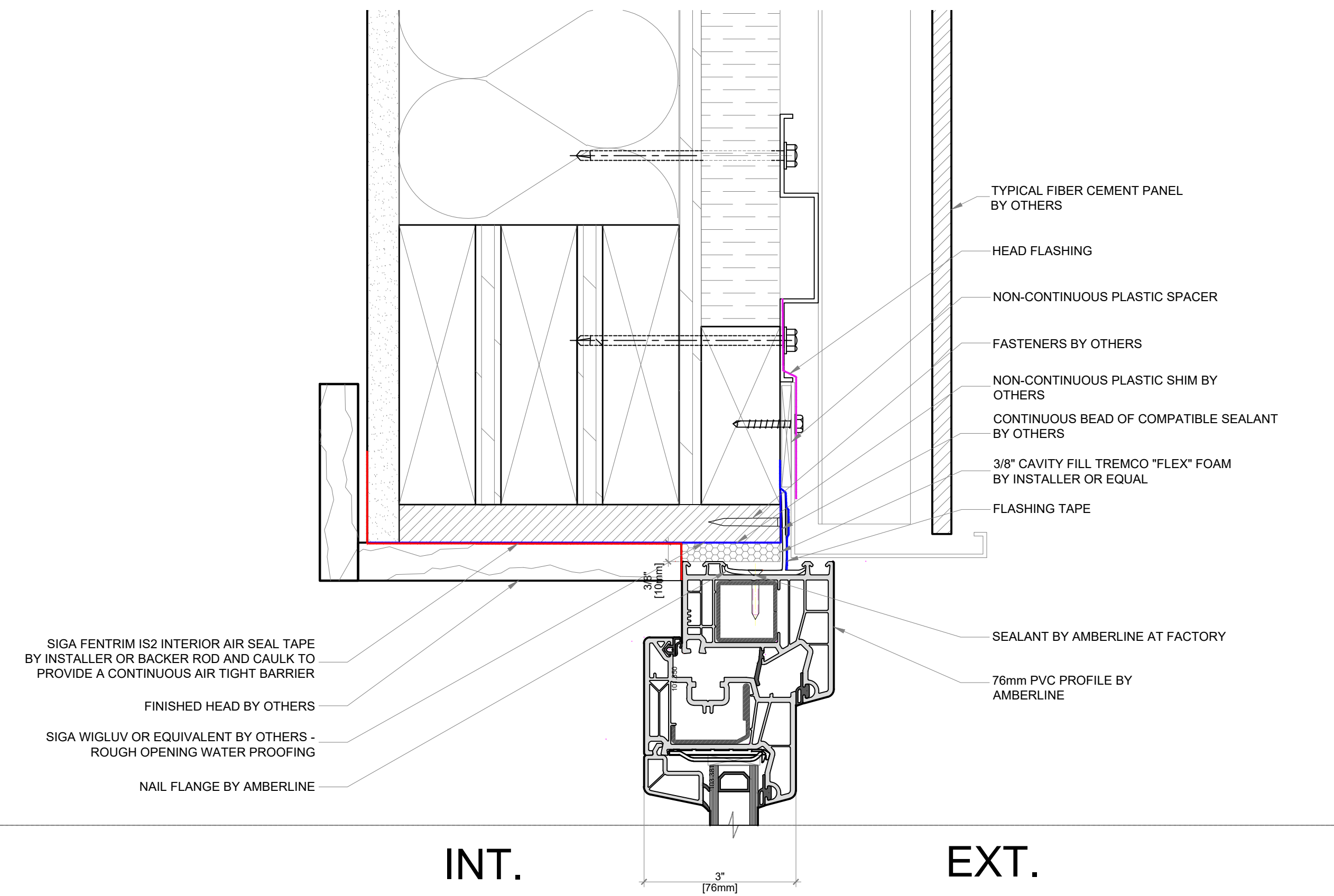
Notes:

Note: Nail Flange is not drawn in unit elevations to provide clarity around Rough Opening.

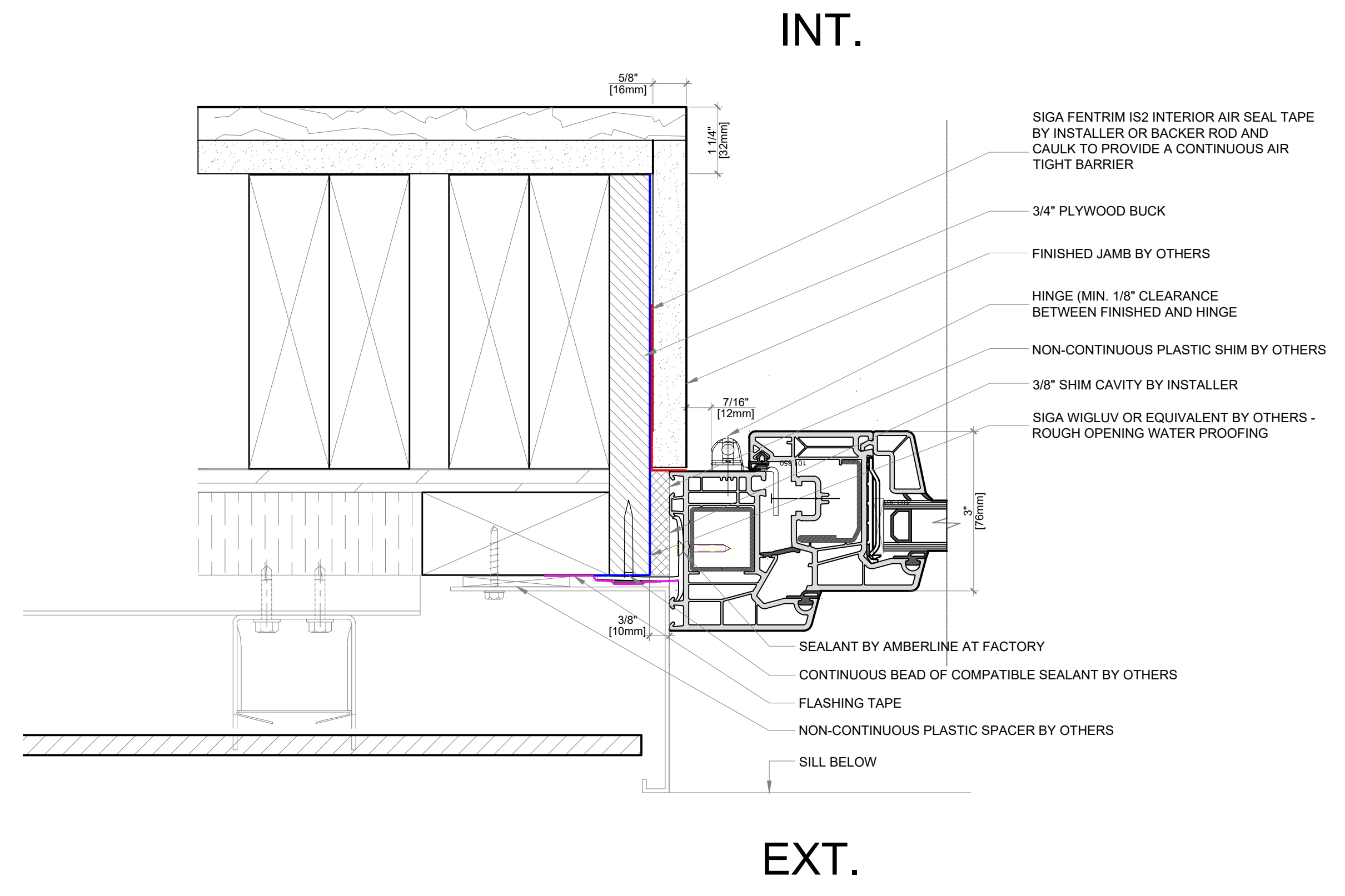
● = Fastener Placement

C

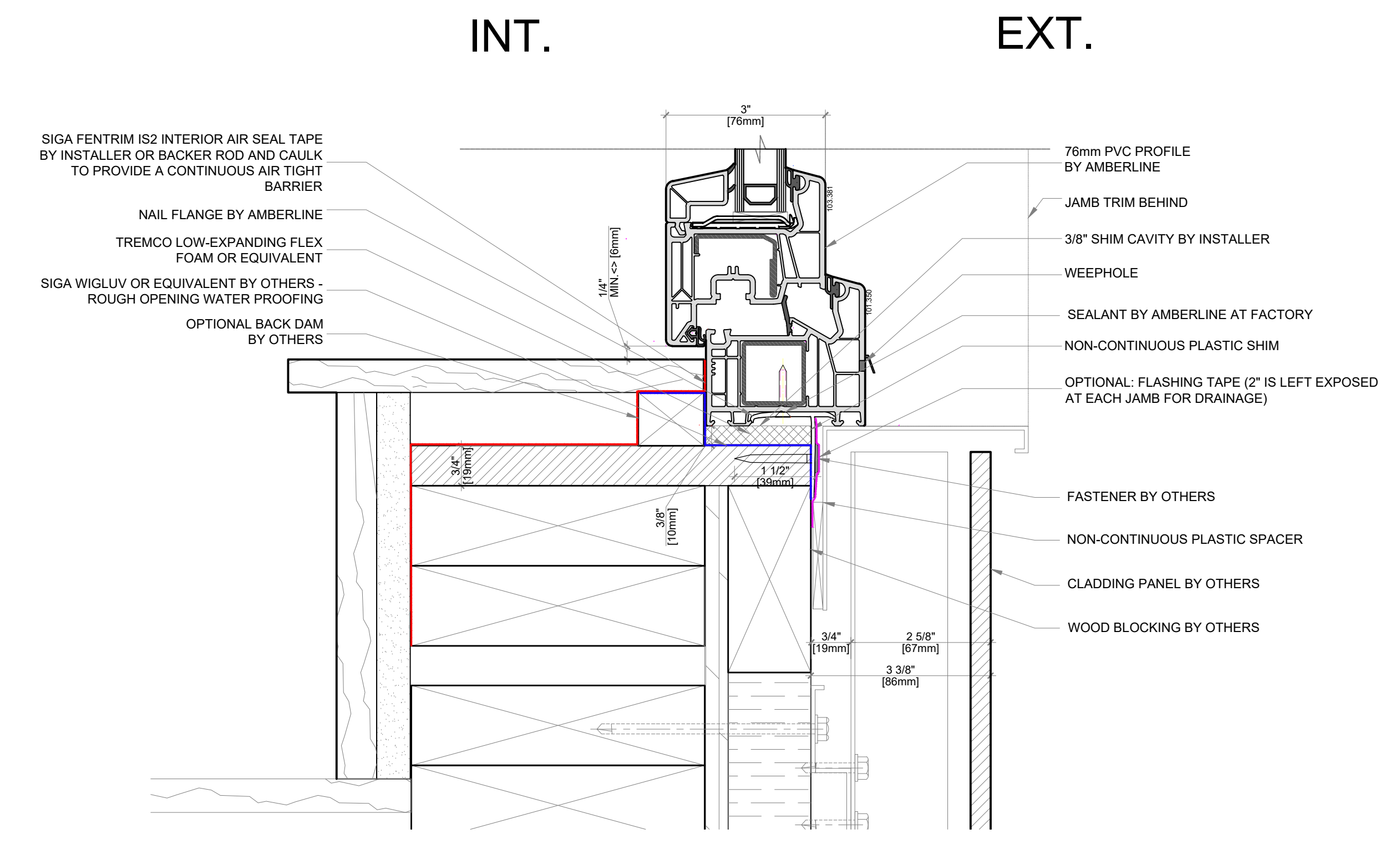
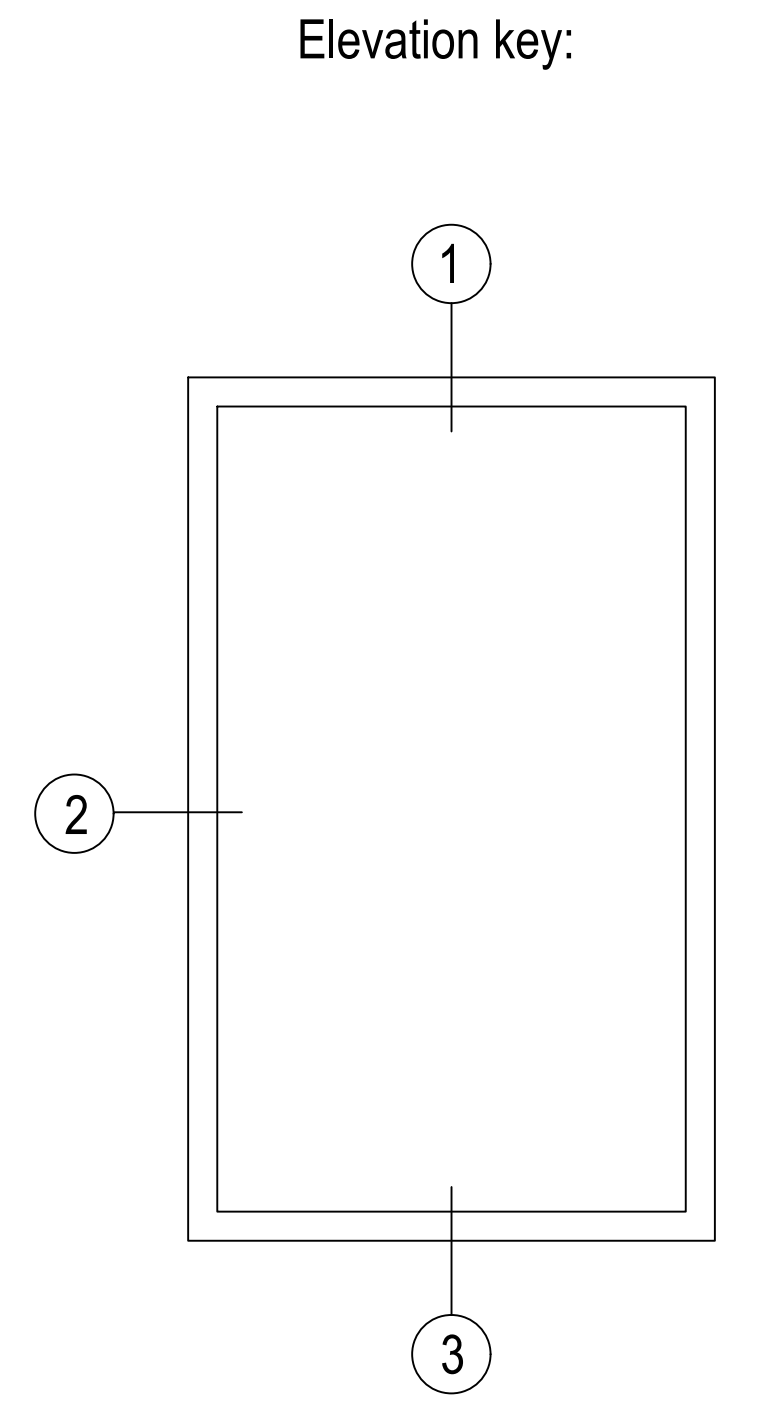
Detail Type : Arrangement of the Fasteners for uPVC or Aluminum Windows	
Drawing Title : Amberline uPVC or Aluminum Shimming/Nail Flange Guidelines	
Date : 11/8/2022	
Drawn By : CN	Scale : 1:10
Drawing No : DG-C	



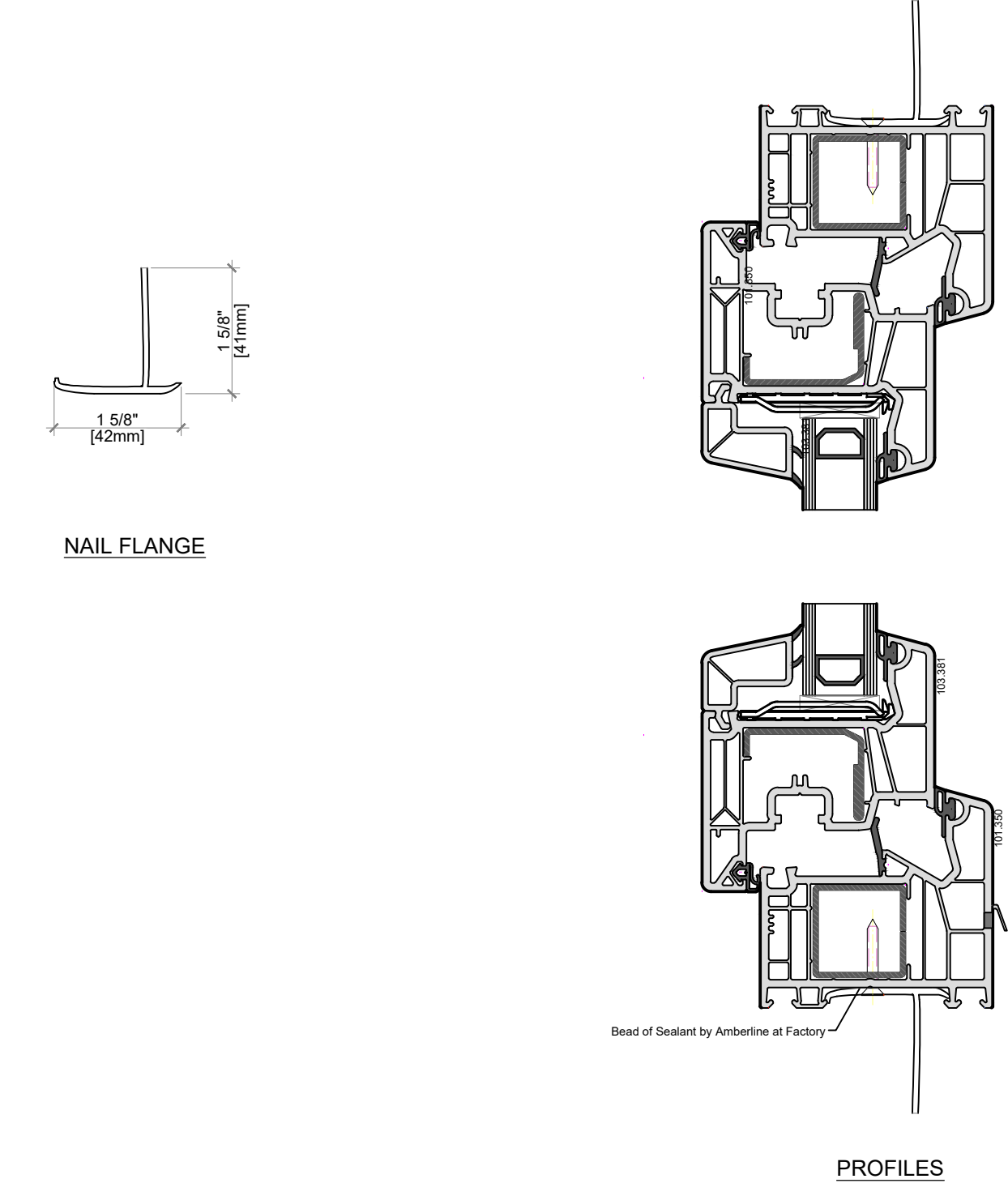
1 WINDOW HEAD
 DG-D SCALE: 6" = 1'



2 WINDOW JAMB
 DG-D SCALE: 6" = 1'



3 WINDOW SILL
 DG-D SCALE: 6" = 1'



4 ELEMENTS PROVIDED BY AMBERLINE
 DG-D SCALE: 6" = 1'

AMBERLINE

Notes:
Note:
 Typical install detail for reference only.
 Project specific detail will vary.

D

Detail Type : Nail Flange Installation Detail	
Drawing Title : Amberline uPVC or Aluminum Shimming/Nail Flange Guidelines	
Date : 02/08/2023	
Drawn By : PS	Scale : 6" = 1'
Drawing No : DG-D	

Elevation key:

Shim and Flange Notes:

If any notes are NOT met, your system warranty will be voided.

Shim Notes:

- WHEN THE WINDOW IS OVER 5 FEET IN HEIGHT, ADD SHIMS AS NEEDED AT THE JAMBS TO KEEP THE PROFILE STRAIGHT.
- WHEN THE BUILDING IS OVER 3 STORIES, THE SHIMMING COULD CHANGE AND/OR MAY NEED TO ADD MORE STRAPS DEPENDING ON THE WIND-LOAD. ANY ADDITIONAL INFORMATION WILL BE PROVIDED WITH THE PROJECT SPECIFIC SHOP DRAWING.
- NO SHIMS ARE USED AT THE HEAD. SHIMS OR WEDGES CAN BE USED TEMPERATELY FOR INSTALLATION. (SEE DIAGRAM)
- ONLY 2 SHIMS ARE USED AT CORNERS ON THE SILL TO TRANSFER THE UNIT'S DEAD LOAD PATHS. **NO SHIMS ARE TO BE USED IN THE MIDDLE OF THE PROFILE.**
- IF THE SHIM CAVITY IS LARGER THEN $\frac{3}{4}$ ", PAD ROUGH OPENING TO DECREASE THE R.O. GAP TO BELOW $\frac{3}{4}$ ".

Flange Notes:

- NON-INTEGRAL FLANGES ARE PROVIDED WITH PRE-DRILLED HOLES AT FACTORY BY AMBERLINE.
- ALL PRE-DRILLED HOLES MUST BE FILLED WITH A NAIL.
- NAILS REQUIRED BY INSTALLER: 1 $\frac{1}{2}$ " GALVANIZED ROOFING NAILS

A M B E **R** L I N E

Notes:

E

Detail Type : uPVC or Aluminum Window Shimming & Strapping Notes

Drawing Title : Amberline uPVC or Aluminum Shimming/Nail Flange Guidelines

Date : 11/7/2022

Drawn By : CN

Scale : 1:1

Drawing No : DG-E