

A M B E  L I N E

HIGH PERFORMANCE WINDOWS AND DOORS

## AMBERLINE U.S.

Amberline U.S. is the stateside distribution company of Amberline Europe.

Amberline Europe has strived to achieve the highest standards for manufacturing quality in all of our window and door systems.



Amberline Europe Corporate Headquarters

# CONTENTS

3

MISSION

4

PROJECT

8

AMBERLINE TEAM

9

PRODUCTION

10

WHY AMBERLINE?

12

PARTNERS

13

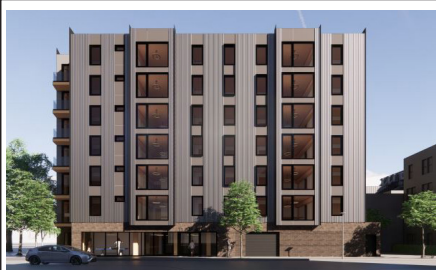
CONTACT US

# MISSION

It is the mission of  
Amberline U.S. to improve  
the quality of living through  
simplified delivery of high  
performance window and  
door solutions to the built  
environment.

## 11 E. LENOX

BOSTON, MA



7-STORY PASSIVE HOUSE

### STATUS

SHOP DRAWINGS

uPVC Windows  
Amberline Veka Softline 82  
Triple-glazed

### SPECS

DELIVERY 7/2021

CLT & Mass Timber  
Sustainable Structural system  
PHIUS Certification

### PACKAGE

\$200,000

Amberline Window and  
Door Package

## 457 W. BROADWAY

S. BOSTON, MA



THE BLAKE

### STATUS

INSTALLED

uPVC Windows  
Amberline Veka Perfectline 70  
Double-glazed

### SPECS

\$18 MILLION

Established Permit Cost

### PACKAGE

\$300,000

Amberline Window Package  
Aluminum Storefront  
Aluprof MB70 Double-glazed

## 44 N. BEACON

ALLSTON, MA



30-UNIT HIGH PERFORMANCE

### STATUS

INSTALLED

uPVC Windows  
Amberline Veka Softline 82  
Triple-glazed

### SPECS

\$8.5 MILLION

Established Permit Cost

### PACKAGE

\$275,000

Amberline Window Package  
Aluminum Storefront  
Aluprof MB86 Triple-glazed

## 1005 BROADWAY

CHELSEA, MA



38 FAMILY UNITS

### STATUS

FABRICATION

uPVC Windows  
Amberline Veka Softline 76  
Triple-glazed

### SPECS

\$12 MILLION

Established Permit Cost  
PHIUS Certification

### PACKAGE

\$220,000

Amberline Window and  
Door Package

# GIANT OFFICE COMPLEX

POZNAŃ, POLAND



EUROPEAN OFFICES

## STATUS

COMPLETE

CDF Architekci  
GC: Budimex

## SPECS

EUROPE

17,421 sqft office  
5,954 sqft retail  
1,443 sqft restaurant

## PACKAGE

INSTALLED

Amberline Window and  
Door Package  
Aluminum Storefront

# SOHO ESTATE

WARSAW, POLAND



WARS RESIDENTIAL

## STATUS

COMPLETE

Residential component of Soho  
Factory project

## SPECS

EUROPE

10-story  
38,057 sqft residential  
140 units

## PACKAGE

INSTALLED

Amberline Window and  
Door Package  
Aluminum Storefront

# BLACK PEARL

SZCZECIN, POLAND



APARTMENTS & CONDOS

## STATUS

COMPLETE

Developer: Poland Idea  
Inwest

## SPECS

EUROPE

9-story  
36,089 sqft

## PACKAGE

INSTALLED

Amberline Window and  
Door Package  
Aluminum Storefront

# PRIVATE RESIDENCE

EUROPE



SINGLE FAMILY

## STATUS

COMPLETE

Artline Windows  
PHIUS Compliant

## SPECS

EUROPE

Large-format glazing  
Minimum frame width

## PACKAGE

INSTALLED

Amberline Window and  
Door Package



# THE AMBERLINE TEAM

## JAMES DRYSDALE

Managing + Technical Director

## SIOBHÁN MCLAUGHLIN

Technical Project Manager

## PAIGE STATHOPOULOS

Lead Technical Detail Coordinator

## DENIS IZMAN

Project Estimator

## TAELORE CRAWLEY

Marketing Director

## PETER LAVELLE

Human Resources

## EUROPE SUPPORT TEAM

Fabrication PVC/ALU, Estimation  
+ Ordering, Logistics, and Quality  
Control



# AMBERLINE PRODUCTION

## Amberline has manufactured high performance windows and doors since 2006

Along with making high performance windows and doors, Amberline is Passive House certified in both uPVC and aluminum. Now in the U.S. distribution market, Amberline has a 15-year history providing windows and doors throughout Europe, which includes Poland, Germany, France, Ireland, and Sweden.

## GROWING PRODUCTION CAPABILITIES IN KOLOZBREG, POLAND

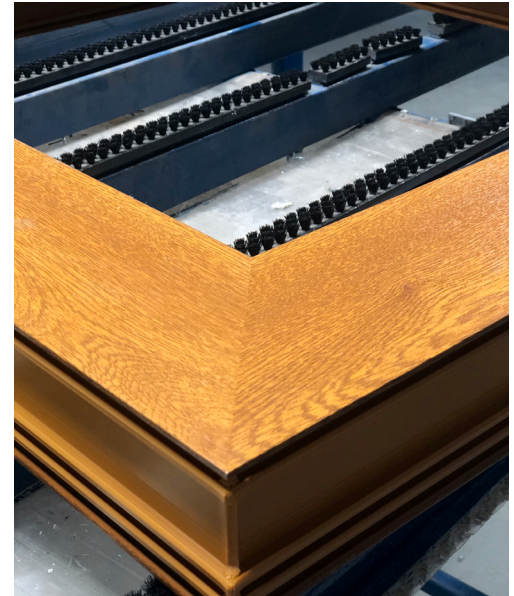
Year	2021
PVC units	130,000 UNITS
Aluminum units	80,000 UNITS
Distribution	OVER 150 INTERNATIONAL PARTNERS IN EU
Employees	190 EMPLOYEES



# WHY AMBERLINE?

## OUR FOCUS

Using three major components in the supply process, we create the best value in our products for key decision makers and end users.



# WHY IS **AMBERLINE** THE BEST CHOICE FOR HIGH PERFORMANCE WINDOW AND DOOR PRODUCTS?

## **PROVEN TRACK RECORD**

Supplying high performance and quality products at a very cost competitive price throughout Europe for the past 15 years

## **TECHNICAL EXPERIENCE**

Able to navigate high value and challenging projects

## **ADVANCED MANUFACTURING FACILITIES**

One of the most automated in Europe with increasing production efficiency

## **UNIQUE PARTNERSHIP**

Distribution into the US eliminates “middle men” and gray area about European supply importers

## **COMMITMENT**

Guaranteed time delivery 12 weeks and under from order date

## **WARRANTY**

10-year system warranty, which is an industry standard that says we stand behind our products

## **PROJECT SCOPE**

Conceptional design through installation training and support

## **PRODUCT SUPPLY CHAIN**

Every component in our products is from leading European suppliers



# PARTNERS

Our products are only as good as the partners and systems used on every unit that we sell. Each component making up a product in our PVC or aluminum systems has been carefully selected for quality, durability, and cost.

PVC FRAME



PVC HARDWARE



ALUMINUM FRAME



ALUMINUM SILLS



WINDOW + DOOR HARDWARE



GLASS AND IGU



# A M B E L I N E

HIGH PERFORMANCE WINDOWS AND DOORS

## CONTACT

[James@amberlinewindows.us](mailto:James@amberlinewindows.us)

## VISIT

[amberlinewindows.us](http://amberlinewindows.us)

## LINKEDIN

[Amberline](#)

## INSTAGRAM

[@amberline\\_us](#)

VISIT OUR SHOWROOM AT **27 BATCHELDER ST, BOSTON, MA**