

SHIPPING & DELIVERY

Notes:

STORAGE ON SITE:

AMBERLINE WINDOWS MUST BE STORED INSIDE OR COVERED AND SECURED AFTER DELIVERY.

SUPPLIER LABELS:

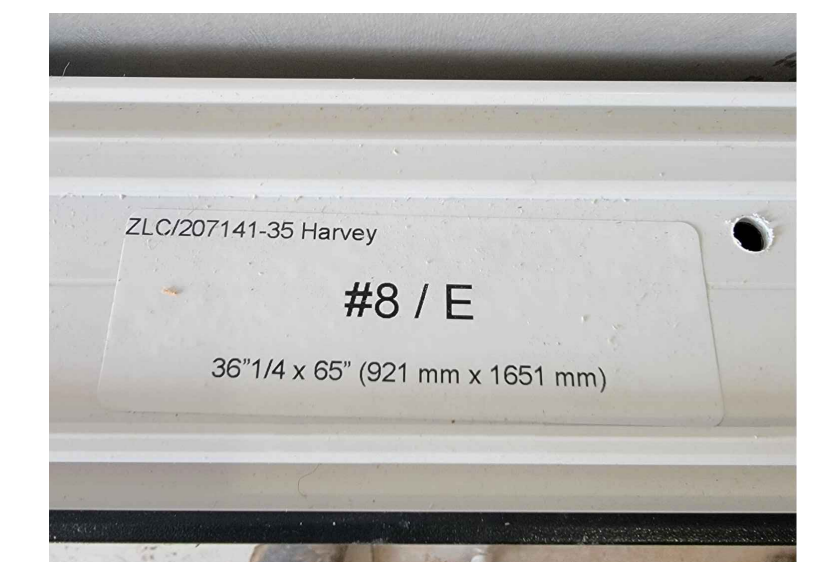
PROTECTIVE PROFILE STICKER COVERS FROM SUPPLIERS (VEKA/ALUPROF) MUST BE REMOVED UPON INSTALLATION TO PREVENT RESIDUE/DISCOLORATION.

ID LABELS:

Amberline ID / Architectural ID

Example Below:

Amberline ID #8 / Arch ID: E



ID will correspond to Shop Drawings

AMBERLINE ID: 8
ARCH ID: E
QTY : 5

A M B E R L I N E

Project: Universal

Client: -

Architect:

Drawing Title: Shipping & Delivery

Contract No: -

Date: 01.01.2023

Drawn By:

Scale: NTS

Drawing No: Shipping & Delivery

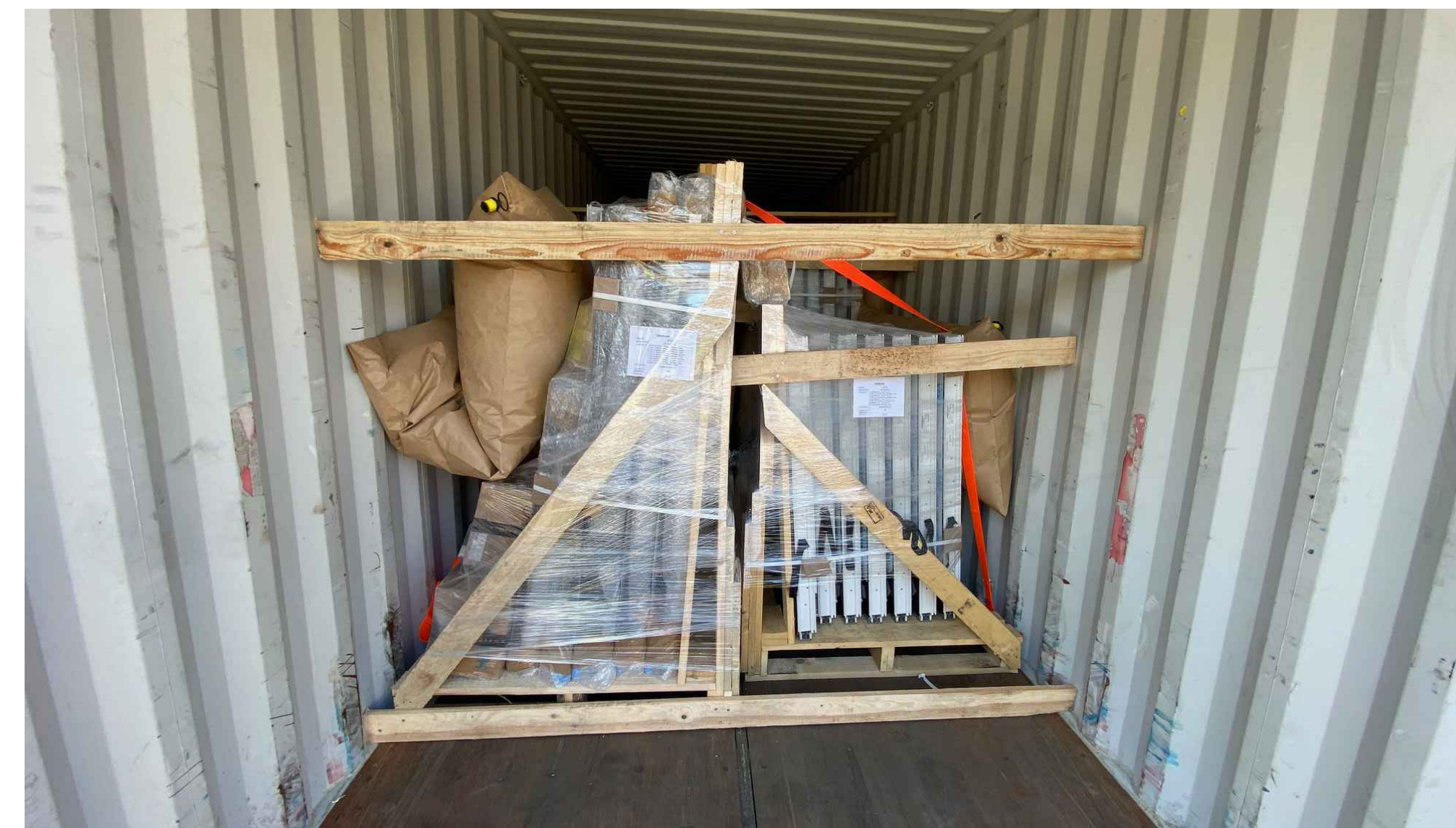
1. PACKAGED IN POLAND



CONTAINERS:

1. PRODUCTS ARE PACKAGED IN POLAND AND SHIPPED TO THE U.S.
2. CONTAINERS ARE 40' IN ADDITION TO THE LENGTH OF THE CAB.
3. CUSTOMER MUST ACCOMMODATE AN UNLOADING ZONE FOR A 40' CONTAINER ON THE JOBSITE. CUSTOMER MUST PLAN AHEAD FOR SAFE ENTRY/EXIT OF THE TRUCK & CONTAINER
4. ALL CONTAINERS ARE **LIVE LOADS** & MUST BE UNLOADED AS SOON AS THEY ARRIVE TO SITE.

2. DELIVERED TO JOBSITE



CONTAINERS:

1. AMBERLINE U.S. WILL COORDINATE ALL LOGISTICS LOGISTICS TO THE JOBSITE.
2. AMBERLINE U.S. WILL HAVE A TEAM MEMBER AT UNLOADING TO ENSURE A SAFE AND SMOOTH UNLOADING. WE WILL ALSO DOCUMENT THAT GOODS ARE RECEIVED.
3. PRODUCTS ARE SECURED IN PALLETS WITH STRAPS AND AIR BAGS FOR SAFE TRANSIT.

3. UNLOADING (MACHINE RECOMMENDED)



MACHINE UNLOADING:

1. WE STRONGLY RECOMMEND PLANNING TO USE A LULL OR EQUIVALENT MACHINE WITH FORKS TO UNLOAD THE PALLETS. THE CRATES CAN BE EXTREMELY HEAVY. WE STRONGLY RECOMMEND FORK EXTENDERS TO HANDLE LONGER PALLETS SAFELY.
2. FOR LIABILITY & INSURANCE REASONS, AMBERLINE DOES NOT UNLOAD/UNPACK ANY OF THE PRODUCTS AT THE JOBSITE. UNLOADING IS THE SOLE RESPONSIBILITY OF THE GC/INSTALLER/OWNER TO COORDINATE & EXECUTE.

4. MANUAL UNLOADING



MANUAL UNLOADING:

1. ANY PRODUCT OVER 7' 6" (90") IN HEIGHT WILL HAVE TO BE MANUALLY UNLOADED. IT WILL BE TOO TALL TO FIT ON A PALLET IN A STANDARD CONTAINER.
2. SOME OTHER SMALLER ITEMS LIKE BOXES AND ACCESSORIES MAY ALSO NEED TO BE MANUALLY UNLOADED.