

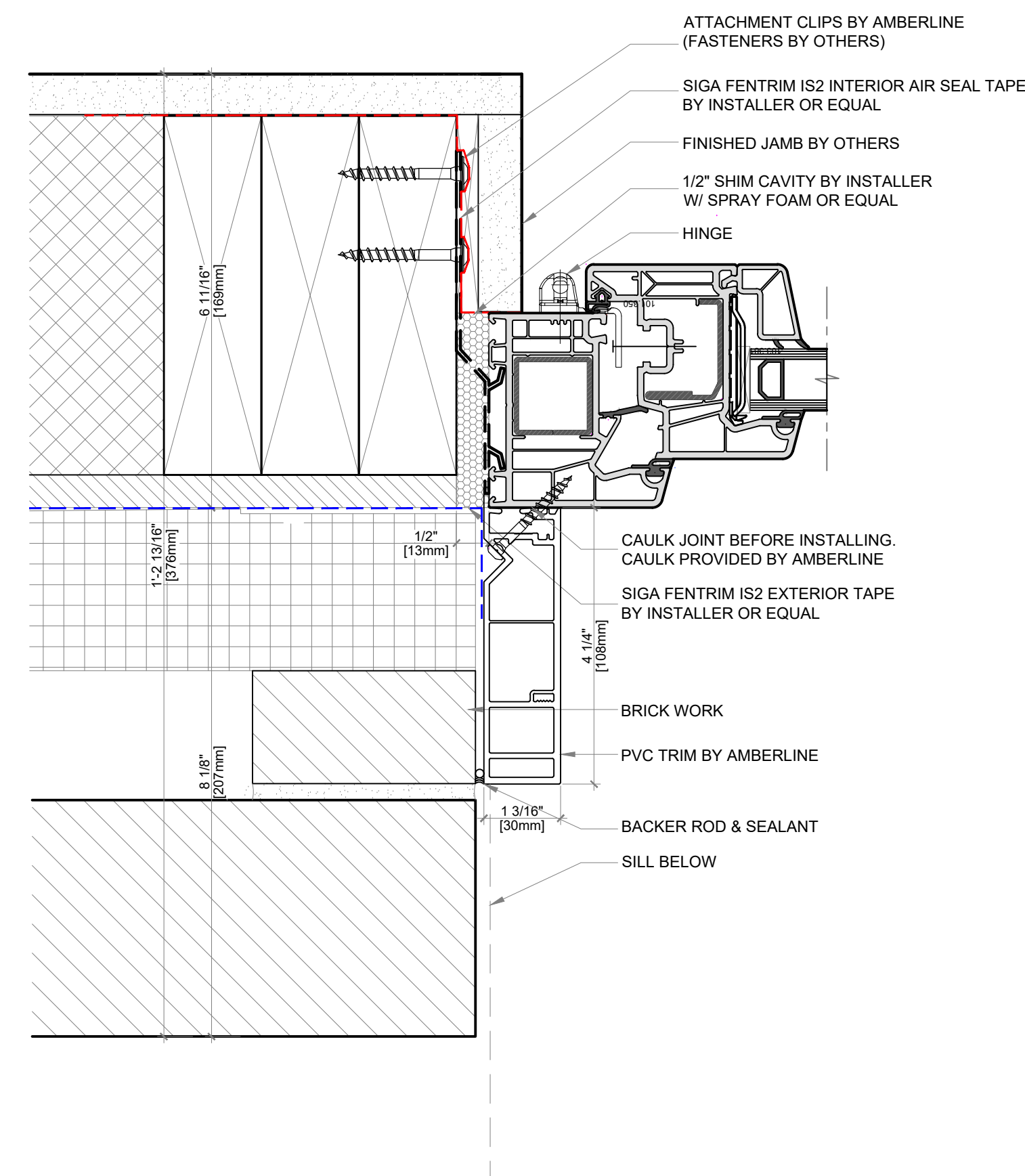
VEKA PVC Trim: Options and Install Details

Example Window: PVC76 Softline

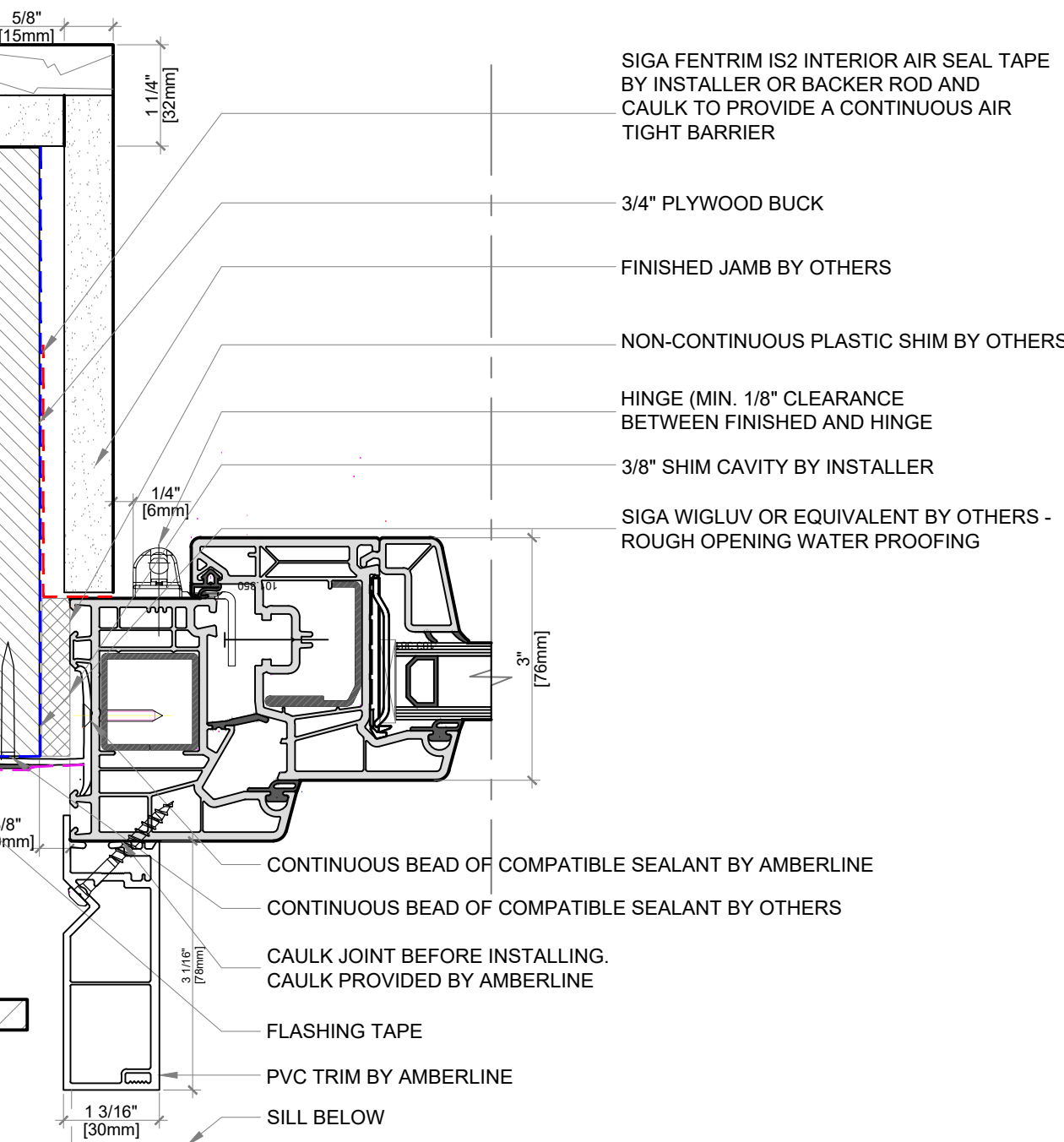
A M B E R L I N E
HIGH PERFORMANCE WINDOWS AND DOORS

INTERIOR

EXTERIOR



1A WINDOW JAMB (Typical Anchor Detail)
SCALE: 6" = 1' 0"



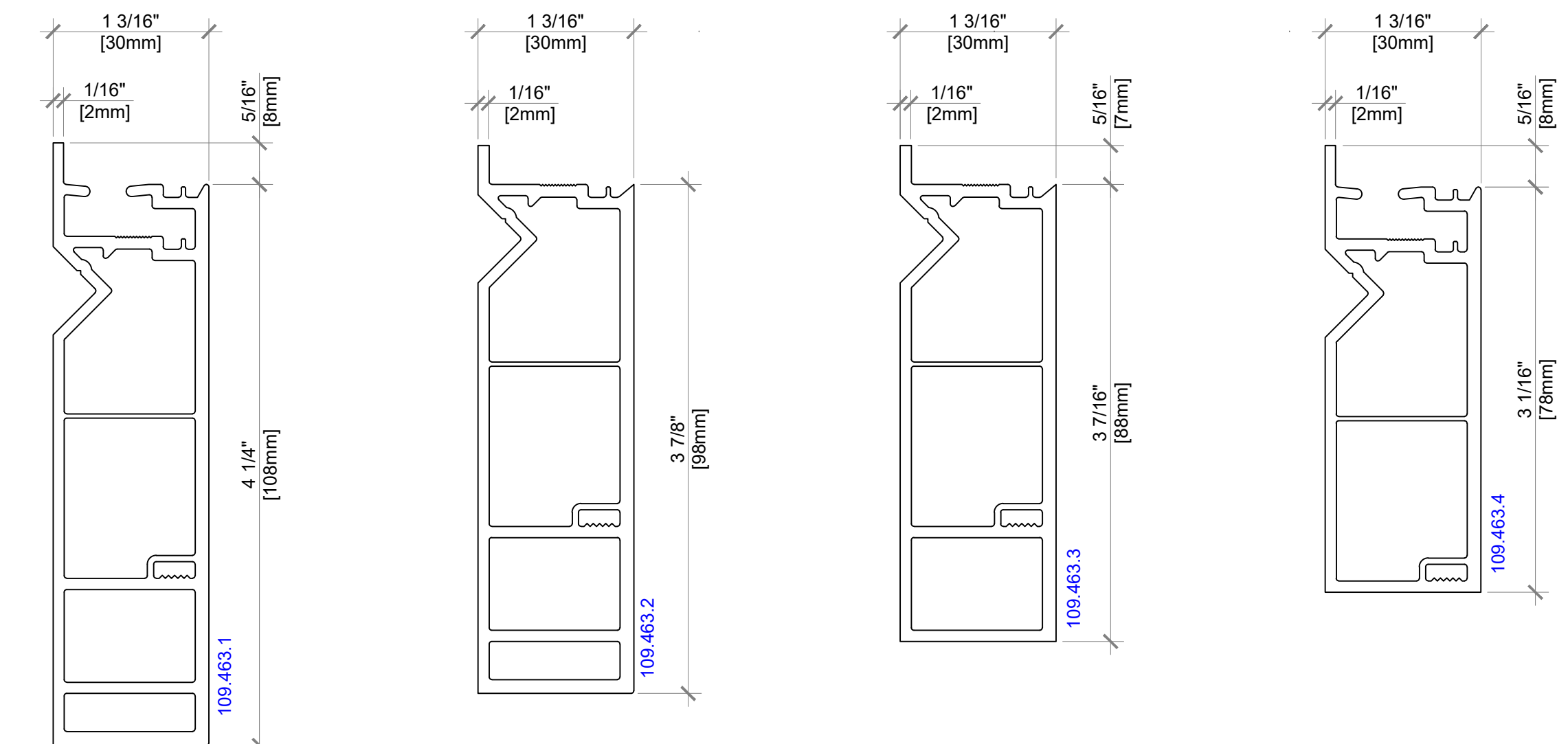
1B WINDOW JAMB (Nail Flange)
SCALE: 6" = 1' 0"

108mm (4 1/4")
Profile: 109.463.1

98mm (3 7/8")
Profile: 109.463.2

88mm (3 7/16")
Profile: 109.463.3

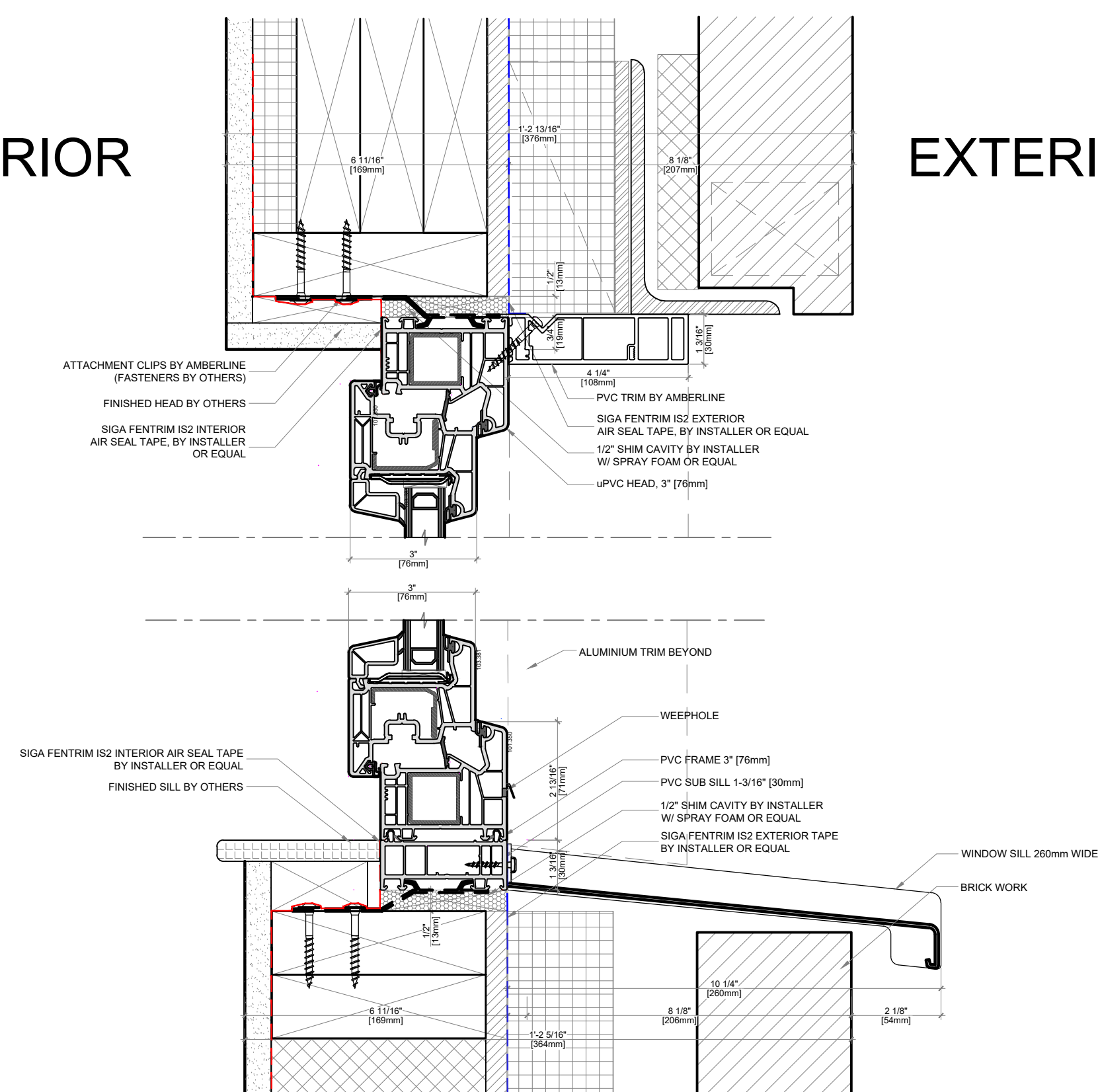
78mm (3 1/16")
Profile: 109.463.4



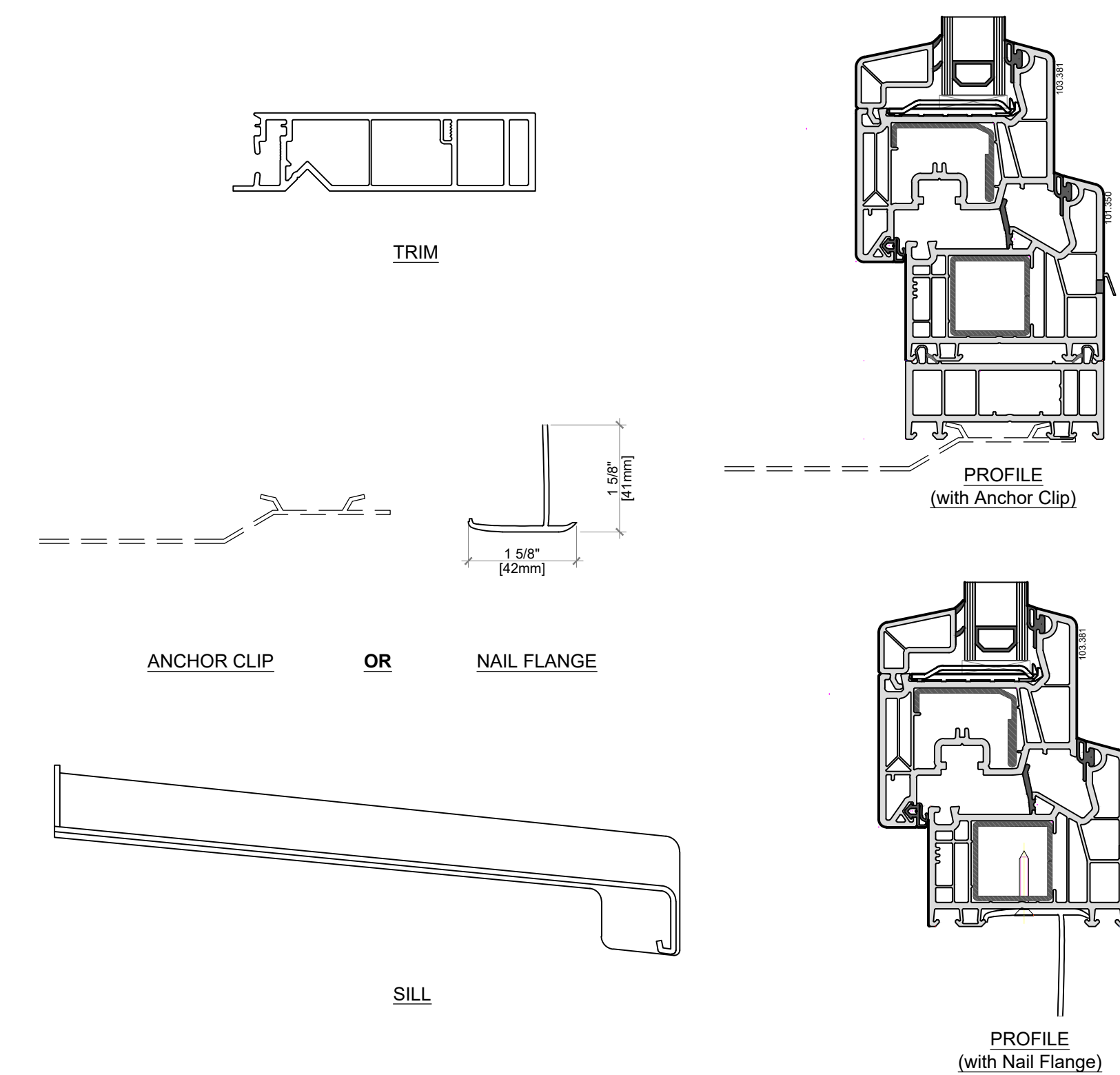
2 VEKA PVC TRIM OPTIONS
SCALE: 12" = 1' 0"

INTERIOR

EXTERIOR

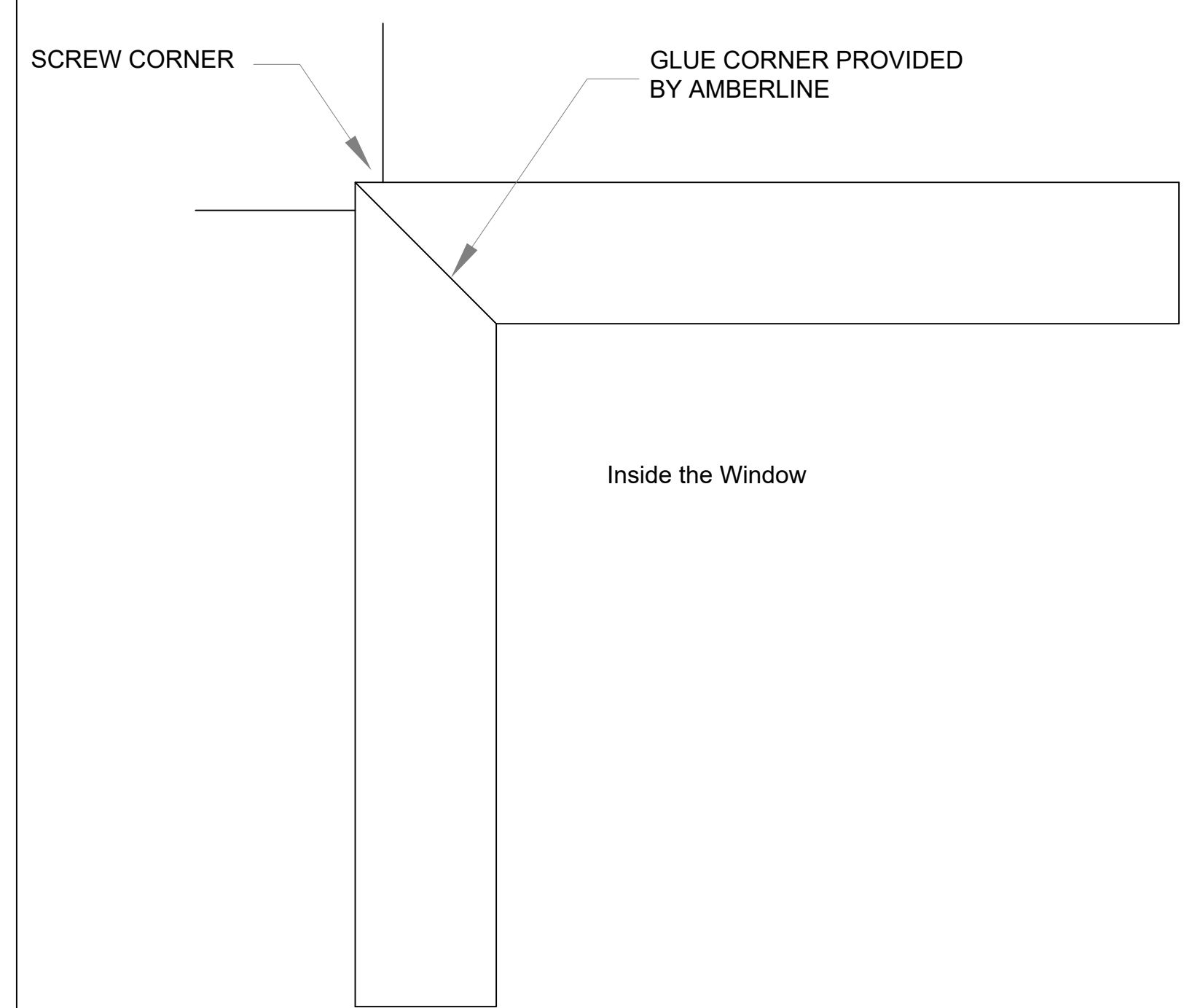


3 WINDOW HEAD & SILL (Typical Anchor Detail)
SCALE: 4" = 1' 0"



4 PROVIDED BY AMBERLINE
SCALE: 6" = 1' 0"

CORNER ASSEMBLY



5 TRIM INSTALL GUIDELINES
SCALE: 6" = 1' 0"

- Install Guidelines:**
1. Install window
 2. Cut profiles to fit the window
 3. Glue and screw the profiles (See Detail 5)
 4. Attach exterior trim with caulk and screws